



RANCH



Lot 14



Lot 26



Lot 1

FALL

PRODUCTION SALE

Friday, October 18, 2024 • 12:30 p.m.
at the Ranch, Morgan, TX





Jeff Chaffin, Ranch Manager
 Joe Walker & Joey Walker, Owners
 Ranch Office: (254) 635-4444
 Ranch Fax: (254) 635-7201
 P. O. Box 9
 Morgan, Texas 76671
www.w4ranch.com

Welcome...



to the 2024 Fall Edition of our Bull & Female Sale!

We are pleased to welcome you to the 2024 fall edition of our Annual Bull and Female sale. We feel this year's offering of 92 two-year old-bulls and 140 registered, spring calving bred heifers are some of the best we have produced.

The bulls selling represent a powerful herd battery here at the ranch. They are once again highlighted by the DH Domino 392A progeny. Even though these bulls were born during a severe drought, they have developed into a powerful offering and exemplify "Hereford efficiency." As is the norm here at W4, these bulls were raised on our "Bull Mountain" and are big footed, rugged, and ready for heavy service.

Now is a great time to upgrade your cow herd. The grass-fed females we are offering carry some top genetics and promise to be productive cows for a long time. The bulls these heifers are bred to have been used in our program with great success.

The cattle are available for viewing anytime, give us a call and we would love to show you around. The sale cattle will be penned for viewing on Thursday, October 17th. We look forward to seeing everyone on Friday October 18, 2024, lunch will be served starting at 11:00 am with the sale starting promptly at 12:30 p.m.

If you can't attend in person, the sale will be broadcast on Superior Livestock Auctions for internet bidding.

Jeff Chaffin
Manager
254/396-2785

"We invite you to view our 2024 Fall production sale..."



Joe Walker



Joey and Kim Walker with Sydney and Tripp



Ranch Crew-Matt Jones, Jeff Chaffin, Austin Roughton



Jeff Chaffin Family



Feed Manager-
 Kenneth Gravelle



Construction Manager-David Williams,
 and not pictured JR Williams



The Offering



82 Two-Year-Old Bulls
10 Two-Year-Old Polled Bulls
50 Spring Calving Registered Hereford Heifers,
bred to low birth weight registered Hereford Bulls
80 Spring Calving Registered Hereford Heifers,
bred to registered Angus bulls



Sale will be broadcast online at Bid.SuperiorLivestock.com
See bidding information on page 52.

Schedule of Events

FRIDAY, OCTOBER 18, 2024

8:00 a.m. – Coffee, donuts and viewing of cattle
11:00 a.m. – Lunch served
12:30 p.m. – Fall Production Sale





Friday, October 18, 2024

12:30 p.m. CST ... at the ranch, Morgan, Texas

Sale Location

W4 Ranch-Steele Creek Headquarters, located on FM 927 between Lakeside Village and Morgan in Bosque County, Texas or 4 miles east of Morgan from Hwy. 174.

Accommodations

Hillsboro, Texas, 29 miles from the ranch

Sale Headquarters: Ramada Inn
 (254) 582-3493 or (877) 200-3392

Other lodging at

Comfort Inn, (254) 582-3338

Holiday Inn Express, (254) 582-0220

Also in Clifton, 20 miles from ranch

Best Western, (254) 675-8999

Air Travel

Dallas/Fort Worth Airport is serviced by most major airlines and is 90 miles from ranch. Waco Airport is located just 40 minutes from ranch. We have a private FAA approved airstrip located on the ranch that can accommodate most all private planes. W4 Ranch airstrip's new location identifier for the landing facility is 84TE.

A 75' wide x 4,500' long asphalt runway.

Call (254) 635-4444 for shuttle to sale barn.

Sale Day Phone

(254) 635-4444 – Phone bids welcomed

Sale Manager

JOHNSON
 CATTLE MARKETING
 Tom Johnson
 440 FM 246 · Wortham, Texas 76693
 (817) 291-5121

Absentee Inquiries/Bids Contact

Tom Johnson, cell (817) 291-5121
 Jeff Chaffin (254) 396-2785
 Joe Walker (817) 965-4560 or office (817) 595-1121
 Joey Walker (817) 395-2228

Bidding/Buying Online

Sale will be broadcast live on SuperiorLivestock.com
Call 817/422-2117 to register.
 See page 52 for details on viewing/bidding/buying.

Auctioneer

Col. Doak Lambert

Sale Staff

Hereford World Cord Weinheimer
 Texas Hereford Missy Coffelt
 Weekly Livestock Reporter Ralph Means
 Special Assignment James Grant and Clint Minchew

Terms of Sale

Terms of sale are CASH, to be paid in full at the conclusion of the sale. We will be glad to consider special terms if arrangements are made prior to the sale date. Contact Tom Johnson.

Sale Conditions

Each animal will be sold to the highest bidder with the auctioneer settling any disputes as to bids. Each animal will become the property of the buyer as soon as sold.

Guarantee

All cattle are guaranteed to be breeders; all females having been examined safe in calf will be considered as proven breeders. Any bull subsequently found to be a non-breeder may be returned in good condition and with our permission within six months of the sale date. We reserve the right to try any reported non-breeder for six months and if we cannot confirm the animal as a breeder will refund the purchase price.

Herd Health

Individual health certificates for interstate shipment will be furnished on all sale cattle. All test-age cattle will have been tested negative for Brucellosis. All the cattle have been vaccinated for 7-Way Blackleg, Lepto and wormed. Mark Jackson, DVM serves as our herd veterinarian.

EPDs

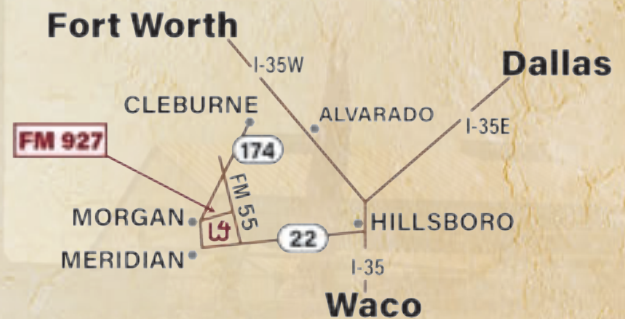
EPDs in this catalog were obtained on September 5, 2024.

Connect with our website



Note

All persons attending the sale do so at their own risk. W4 Ranch nor any person connected with the sale assumes liability, legal or otherwise, for any accidents which may occur.





 **BAR NONE** 
COUNTRY STORE

**WHY IS THE PURINA® ACCURATION® AND
PURINA® WIND & RAIN® MINERAL THE RIGHT
FIT FOR MY OPERATION?**

One size doesn't fit all, especially in the cattle world.

That's why Purina® Accuration® and Purina® Wind & Rain® Mineral provide cow/calf producers flexibility to select from high-quality nutrition options to create a whole herd nutrition program that best fits their needs. Purina® is the foundation for success with elite, complete nutrition programs. Producers can also choose to enter additional value-added programs that are amplified by the research-based and time-tested approach of Purina Animal Nutrition®.

**WORK WITH BAR NONE COUNTRY STORE
TO CREATE A TAILORED PLAN TO MEET
YOUR OPERATION'S GOALS.**

CONTACT US FOR MORE INFORMATION



254-848-9112



barnoneag@yahoo.com



WWW.BARNONECOUNTRYSTORE.COM



The W4 Ranch



Jeff Chaffin, Ranch Manager
Joe Walker & Joey Walker, Owners
Ranch Office: (254) 635-4444
Ranch Fax: (254) 635-7201
P. O. Box 9
Morgan, Texas 76671
www.w4ranch.com

Bull Development

Our Bull Development Center is 100 acres that is divided into five paddocks with a 200 feet tall rock hill in the center.

After preconditioning, these bulls are divided by age groups and walked to the paddocks.

On one side of the hill is their water and on the opposite side, their feed source.

The distance is a half mile each way and requires climbing the rock hill. This procedure strengthens hocks and feet as well as builds muscle.

Bulls raised in this environment will work anywhere and gain as they are working.

- ✓ Bulls weaned, vaccinated and wormed at 205 days.
- ✓ Bulls conditioned on starter ration for 21 days and then transitioned to a high roughage ration for the remainder of the feed period.
- ✓ Bulls raised on high roughage ration.
- ✓ Bulls weaning and yearling weights are adjusted.

"Our bulls will work anywhere and gain as they are working..."



Performance & Carcass

EPD Information

Calving Ease – Direct (CE)

CE EPD is based on calving ease scores and birth weights and is measured on a percentage. CE EPD indicates the influence of the sire on calving ease in females calving at 2 years of age. For example, if sire A has a CE EPD of 6 and sire B has a CE EPD of -2, then you would expect on average if comparably mated, sire A's calves would be born with an 8% more likely chance of being unassisted when compared to sire B's calves.

Birth Weight (BW)

BW EPD is an indicator trait for calving ease and is measured in pounds. For example, if sire A has a BW EPD of 3.6 and sire B has a BW EPD of 0.6, then you would expect on average if comparably mated, sire A's calves would come 3 lb. heavier at birth when compared to sire B's calves. Larger BW EPDs usually, but not always, indicate more calving difficulty. The figure in parentheses found after each EPD is an accuracy value or reliability of the EPD.

Weaning Weight (WW)

WW EPD is an estimate of pre-weaning growth that is measured in pounds. For example, if sire A has a WW EPD of 60 and sire B has a WW EPD of 40, then you would expect on average if comparably mated, sire A's calves would weigh 20 lb. heavier at weaning when compared to sire B's calves.

Yearling Weight (YW)

YW EPD is an estimate of post-weaning growth that is measured in pounds. For example, if sire A has a YW EPD of 100 and sire B has a YW EPD of 70, then you would expect on average if comparably mated, sire A's calves would weigh 30 lb. heavier at a year of age when compared to sire B's calves.

Scrotal Circumference (YSC)

Measured in centimeters and adjusted to 365 days of age, SC EPD is the best estimate of fertility. It is related to the bull's own semen quantity and quality, and is also associated with age at puberty of sons and daughters. Larger SC EPDs suggest younger age at puberty. Yearling sons of a sire with a .7 SC EPD should have yearling scrotal circumference measurements that average 0.7 centimeters (cm) larger than progeny by a bull with an EPD of 0.0 cm. In the Hereford genetic analysis, a multiple-trait model was used for scrotal circumference. Weaning weight was used as a predictor variable to increase the prediction accuracy of SC EPDs. Therefore, an animal with a weaning weight EPD should also have a SC EPD.

Maternal Milk (MM)

The milking ability of a sire's daughters is expressed in pounds of calf weaned. It predicts the difference in average weaning weights of sires' daughters' progeny due to milking ability. Daughters of the sire with a +14 MM EPD should produce progeny with 205-day weights averaging 24 lb. more (as a result of greater milk production) than daughters of a bull with a MM EPD of -10 lb. (14 minus -10.0 = 24 lb.). This difference in weaning weight is due to total milk production during the entire lactation.

Teat Size (TEAT)

Scores range from 9 (very small) to 1 (very large, balloon shaped) and are subjective assessments of the teat length and circumference. Oversized teats are difficult for newborn calves to nurse, and the calf may not receive adequate colostrum. This could lead to a higher incidence of scours or decreased immunity levels in the newborn calf.

TEAT EPDs are reported on the scoring scale. Differences in sire EPDs predict the difference expected in the sires' daughters' udder characteristics when managed in the same environment. For example, if sire A has a teat size EPD of 0.4, and sire B has a teat size EPD of -0.1, the difference in the values is 0.5, or one-half of a score. If daughters of sires A and B are raised and managed in the same environment, you would expect half a score smaller teat size in daughters of sire A, compared to sire B.

Ribeye Area (REA)

REA EPDs reflect differences in an adjusted 365-day ribeye area measurement based on carcass measurements of harvested cattle. Sires with relatively higher REA EPDs are expected to produce better-muscled and higher percentage yielding slaughter progeny than will sires with lower REA EPDs. Ultrasound measurements are also incorporated into this trait and have been shown to be highly correlated with the performance of slaughter progeny. All data is expressed on a carcass scale.

Marbling (MARB)

MARB EPDs reflect differences in an adjusted 365-day marbling score (intramuscular fat, [IMF]) based on carcass measurements of harvested cattle. Breeding cattle with higher MARB EPDs should produce slaughter progeny with a higher degree of IMF and therefore higher quality grades. Ultrasound measurements are also incorporated into this trait and have been shown to be highly correlated with the performance of slaughter progeny. All data is expressed on a carcass scale.

Baldy Maternal Index (BMIS)

The Baldy Maternal Index is a maternally focused index that is based on a production system that uses Hereford x Angus cross cows. Progeny of these cows are directed towards Certified Hereford Beef. This index has significant weight on Sustained Cow Fertility, which predicts fertility and longevity of females. There is a slightly positive weight on Weaning Weight, Mature Cow Weight and Milk which accounts for enough growth but ensures females do not increase inputs. There is some negative emphasis on Dry Matter Intake, but a positive weighting on Carcass Weight which is anticipated to provide profitability from finishing of non-replacement females and castrated males. Marbling and Rib-eye Area are also positively weighted to keep the harvested progeny successful for CHB. This index is geared to identify Hereford bulls that will be profitable when used in a rotational cross with mature commercial Angus cows.

Brahman Influence Index (BIIS)

The Brahman Influence Index is a maternally focused index that is based on a production system that uses Hereford x Hereford cross cows. Progeny of these cows are directed towards a commodity beef market since Certified Hereford Beef does not accept Brahman influenced cattle. This index has significant weight on Sustained Cow Fertility, which predicts fertility and longevity of females. There is a slightly positive weight on Weaning Weight, Mature Cow Weight and Milk which accounts for enough growth but ensures females do not increase inputs. There is some negative emphasis on Dry Matter Intake, but a positive weighting on Carcass Weight which is anticipated to provide profitability in finishing non-replacement females and castrated males. Marbling and Rib-eye Area are also positively weighted to keep harvested progeny successful for a variety of commodity based programs. This index targets producers that use Hereford bulls on Brahman influenced cows.

Certified Hereford Beef Index (CHBS)

The Certified Hereford Beef Index is a terminal sire index that is built on a production system where Hereford bulls are mated to mature commercial Angus cows where all progeny will be targeted for Certified Hereford Beef after the finishing phase. This index has significant weight on Carcass Weight and Marbling to ensure profit on the rail. As well there is a positive weighting for Average Daily Gain along with a negative weighting on Dry Matter Intake to ensure efficient pounds of growth in the finishing phase. In addition, there is a positive weighting for Rib-eye Area and a negative weighting for Back Fat to maintain desirable Yield Grades. This is the only index that has no emphasis on fertility. Remember that no replacement heifers are being retained.

	CE	BW	WW	YW	SC	MM	TEAT	REA	MARB	BMI	BII	CHB
Upper 1%	15.6	-3.8	75	122	1.9	41	1.6	0.90	0.57	478	573	175
2%	13.3	-1.6	73	118	1.8	39	1.5	0.84	0.49	461	555	167
10%	8.5	0.5	66	107	1.5	34	1.4	0.66	0.30	415	501	144
30%	4.9	1.9	60	96	1.2	30	1.3	0.51	0.17	373	450	125
50%	2.7	2.8	56	89	1.0	27	1.2	0.42	0.11	346	417	115



W4 1326 HARD EIGHT 101D ET

DOB: 03/25/2016 Bull 43735397 Tattoo: 101D

STARTCF LOCK-N-LOAD 300W ET
TFR KU ROLL THE DICE 1326 (43477667)
LH LANGFORD LADY 0253 ET
CL 1 DOMINO 750T 1ET
HH MISS ADVANCE 9168W (42999438)
HH MISS ADVANCE 6109S

BW	WW	YW	Milk	MV	YSC	REA	MARB	CHB
3.4	54	83	33	60	1.0	0.73	0.15	128



W4 7195 ADVANCE DOM 101G ET

DOB: 5/4/2019 Bull 44104035 Tattoo: 101G

CL 1 DOMINO 215Z
CL 1 DOMINO 7195E (43800290)
CL 1 DOMINETTE 351A
HH ADVANCE 221 ET
H CCC MS 1068Y ADVANCE 4431 ET (43488270)
HH MISS ADVANCE 1068Y ET

BW	WW	YW	Milk	MV	YSC	REA	MARB	CHB
1.5	59	97	30	60	0.3	0.55	0.11	138



CHURCHILL ADVANCE 0317H ET

DOB: 08/08/2020 Bull 44240592 Tattoo: 0317H

HH ADVANCE 6212D ET
HH ADVANCE 8132F (43896818)
HH MISS ADVANCE 6040D ET
HH ADVANCE 3022A ET
CHURCHILL LADY 5191C (43586842)
CHURCHILL LADY 220Z

BW	WW	YW	Milk	MV	YSC	REA	MARB	CHB
1.0	59	88	33	63	1.2	0.50	0.20	136



DH DOMINO 392A

DOB: 12/08/2013 Bull 43459361 Tattoo: 392

CL 1 DOMINO 860U
CL 1 DOMINO 0141 1ET (43082416)
CL 1 DOMINETTE 475P
DH ADVANCE 736
DH MISS ADVANCE 9156 (43068442)
DH DOMINETTE 7157

BW	WW	YW	Milk	MV	YSC	REA	MARB	CHB
2.3	70	114	35	70	1.1	0.60	-0.07	106



C BAILEES MILES 4312 ET

DOB: 03/18/2014 Bull 43487323 Tattoo: 14312

NJW 98S R117 RIBEYE 88X ET
C MILES MCKEE 2103 ET (43270668)
C NOTICE ME ET
DM BR SOONER
BR BAILEE 1066 ET (43224862)
BR GABRIELLE 5082

BW	WW	YW	Milk	MV	YSC	REA	MARB	CHB
5.0	59	99	30	59	0.5	0.62	0.15	125

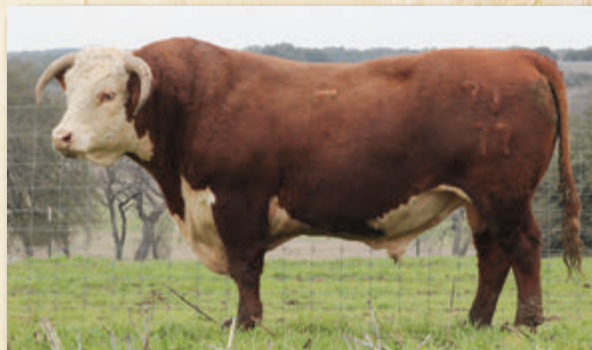




CL 1 DOMINO 7177E

DOB: 02/01/2017 Bull 43800276 Tattoo: 7177E

CL 1 DOMINO 1161Y
CL1 DOMINO 5191C 1ET (43575937)
 CL1 DOMINETTE 120Y
 CL 1 DOMINO 105Y
CL1 DOMINETTE 5201C 1ET (43576252)
 L1 DOMINETTE 02439



BW	WW	YW	Milk	MV	YSC	REA	MARB	CHB
1.4	68	102	30	64	1.5	0.36	0.23	117



CL 1 DOMINO 7195E

DOB: 02/04/2017 Bull 43800290 Tattoo: 7195E

CL 1 DOMINO 9122W 1ET
CL 1 DOMINO 215Z (43268007)
 CL 1 DOMINETTE 055X
 GB L1 DOMINO 175E
CL 1 DOMINETTE 351A (43379691)
 CL1 DOMINETTE 1118Y



BW	WW	YW	Milk	MV	YSC	REA	MARB	CHB
2.0	71	111	25	61	1.3	0.54	0.25	155

REFERENCE SIRE	REG #	BW	WW	YW	Milk	MV	YSC	REA	MARB	CHB
CHURCHILL BELLE HEIR 064H	44149873	1.9	54	86	29	56	1.4	0.86	0.12	140
W4 4108 HOMETOWN 106D ET	43742956	3.6	54	88	30	57	1.2	0.41	0.23	125
W4 7195 ADVANCE DOM 107G ET	44189991	2.2	57	89	30	58	1.0	0.44	0.10	127
W4 2296 SENSATION 108E	P43852998	1.9	58	97	35	64	0.6	0.88	0.05	130
CHURCHILL LONG HAUL 127J	44267936	1.8	61	100	37	68	1.4	0.67	0.12	126
CHURCHILL LONG HAUL 127J	44267936	2.0	62	97	33	64	1.6	0.41	0.25	136
CHURCHILL DOMINO 203K	P44377976	2.0	71	113	37	72	1.6	0.83	0.19	171
FS ADVANCE 1010J	44307017	3.5	62	100	26	57	1.9	0.06	0.38	115
KGB TFR KR SENSATION 028X 1600	43772981	0.9	60	93	43	74	1.5	0.43	0.20	114
FS ADVANCE 2074K	44525944	-0.3	60	99	29	59	1.4	0.36	0.28	134
C 4038 BELLE AIR 9101 ET	44019153	2.1	65	101	37	70	1.6	0.41	0.37	136
RCR LONG COFFEE 20021	P44119843	2.4	70	108	40	75	1.5	0.57	0.15	138
W4 DIABLO ROGER F613	44113970	4.3	65	102	36	69	2.0	0.95	0.15	148
W4 NIGHTCAP G025	44226528	3.0	66	115	31	64	0.7	0.59	0.27	147
HH ADVANCE 2014K	44346678	2.7	59	93	28	57	0.8	0.61	0.38	163
W4 942G DOMINO J035	44424737	1.3	53	87	22	48	2.3	0.35	0.31	154



1 | W4 0159 ADVANCED 502K ET

Lot 1 is a really deep sided bull with extra muscle shape down his top and lower quarter. Sired by the HH Advance 0159H bull, he will add carcass quality to his offspring. He ranks in the top 1% for Maternal Milk! He is a tremendous young prospect out of the great 5131 Churchill donor cow.



SIRE OF LOT 1 | HH ADVANCE 0159H



DAM OF LOT 1 | CHURCHILL 5131 9800

Lot 2 is a very complete bull with pigment and shape. He is sired by the Genex bull ROUGHNECK and out of a great uddered COOPER cow. He is heifer safe and has really nice teat and udder scores.



SIRE OF LOT 2 | ROUGHNECK



2 | W4 0280 ROUGHNECK 505K ET



W4 0159 ADVANCED 502K ET

DOB: 12/1/2022 Bull 44488946 Tattoo: 502K Horned

HH ADVANCE 7088E
HH ADVANCE 0159H 44128721
 HH MISS ADVANCE 6317D
 SR BAKKEN 62Z
CHURCHILL LADY 5131C ET 43586786
 CHURCHILL LADY 9123W ET

EPDs								
BW	WW	YW	Milk	MV	YSC	REA	MARB	CHB
3.9	64	100	42	74	1.4	0.71	0.34	156

PERFORMANCE			PIGMENT	
BW	Adj. WW	Adj. YW	Left Eye	Right Eye
70	916	1419	100	100



W4 0280 ROUGHNECK 505K ET

DOB: 11/14/2022 Bull 44581269 Tattoo: 505K Horned

CHURCHILL ROUGH RIDER 719E
CHURCHILL ROUGHNECK 0280H ET 44198621
 CHURCHILL W4 LADY 770E
 GB L1 DOMINO 177R
CL1 DOMINETTE 495B 43465905
 CL 1 DOMINETE 1133Y 1ET

EPDs								
BW	WW	YW	Milk	MV	YSC	REA	MARB	CHB
1.2	57	90	31	59	1.6	0.51	0.13	128

PERFORMANCE			PIGMENT	
BW	Adj. WW	Adj. YW	Left Eye	Right Eye
62	785	1442	100	100



3 | W4 0025 ADVANCE DOM 507K ET

Lot 3 is a repeat mating that was very popular. Straight Line 1 pedigree with look and power. His full brother sold in last spring's sale and was on the cover.



SIRE OF LOT 3 | HH ADVANCE 0025H

If you like them big, stout and soggy then you need to check out this Lot 4 polled bull. Not to mention he is sired by the best bull to ever breed cows here at W4. 392A is a legend and you have the opportunity to own a polled son.



SIRE OF LOT 4 | DH DOMINO 392A



4 | W4 392A MR BEEF K583



W4 0025 ADVANCE DOM 507K ET

DOB: 11/11/2022 Bull 44582429 Tattoo: 507K Horned

CL 1 DOMINO 883F 1ET
 HH ADVANCE 0025H ET 44129518
 HH MISS ADVANCE 1010Y ET
 GB L1 DOMINO 177R
 CL1 DOMINETTE 495B 43465905
 CL 1 DOMINETE 1133Y 1ET

EPDs								
BW	WW	YW	Milk	MV	YSC	REA	MARB	CHB
2.8	58	90	34	63	1.3	0.52	0.22	145

PERFORMANCE			PIGMENT	
BW	Adj. WW	Adj. YW	Left Eye	Right Eye
71	822	1416	100	100



W4 392A MR BEEF K583

DOB: 9/25/2022 Bull 44586922 Tattoo: K583 Polled

CL 1 DOMINO 0141 1ET
 DH DOMINO 392A 43459361
 DH MISS ADVANCE 9156
 CHURCHILL CINCH 5101C
 SR JAMBA DREAMGIRL 1819 P43987884
 SR LADY RAWHIDE 1638

EPDs								
BW	WW	YW	Milk	MV	YSC	REA	MARB	CHB
1.6	57	95	32	61	0.9	0.49	-0.05	105

PERFORMANCE			PIGMENT	
BW	Adj. WW	Adj. YW	Left Eye	Right Eye
69	662	1342	100	100



W4 108E SENSATION K673

DOB: 10/10/2022 Bull 44586928 Tattoo: K673 Polled

UPS SENSATION 2296 ET
W4 2296 SENSATION 108E P43852998
TOWNER PHYLLIS 20B ET
HH ADVANCE 5044C ET
CHURCHILL LADY 7234E 43802032
CHURCHILL LADY 2137Z

EPDs								
BW	WW	YW	Milk	MV	YSC	REA	MARB	CHB
2	58	94	32	61	0.8	0.57	0.12	124
PERFORMANCE			PIGMENT					
BW	Adj. WW	Adj. YW	Left Eye	Right Eye				
74	654	1328	80	90				



W4 0021 COFFEE DOM K684

DOB: 10/12/2022 Bull 44586926 Tattoo: K684 Polled

NJW LONG HAUL 36E ET
RCR LONG COFFEE 20021 P44119843
RCR MS COFFEE 3027 17723 ET
HH ADVANCE 4075B ET
W4 4075 LADY ADVANCE 108H ET 44433134
CHURCHILL LADY 5358C ET

EPDs								
BW	WW	YW	Milk	MV	YSC	REA	MARB	CHB
3.1	69	106	33	68	1.2	0.49	0.19	132
PERFORMANCE			PIGMENT					
BW	Adj. WW	Adj. YW	Left Eye	Right Eye				
68	727	1383	100	100				



W4 0021 COFFEE DOM K761

DOB: 11/24/2022 Bull 44586920 Tattoo: K761 Polled

NJW LONG HAUL 36E ET
RCR LONG COFFEE 20021 P44119843
RCR MS COFFEE 3027 17723 ET
DH DOMINO 392A
W4 392A DOMET G587 44227346
DH L1 DOMINETTE 486

EPDs								
BW	WW	YW	Milk	MV	YSC	REA	MARB	CHB
1.8	59	95	34	63	1.2	0.39	0.05	117
PERFORMANCE			PIGMENT					
BW	Adj. WW	Adj. YW	Left Eye	Right Eye				
66	661	1345	100	100				



W4 0021 COFFEE DOM K766

DOB: 12/2/2022 Bull 44586924 Tattoo: K766 Polled

NJW LONG HAUL 36E ET
RCR LONG COFFEE 20021 P44119843
RCR MS COFFEE 3027 17723 ET
DH DOMINO 392A
W4 392A DOMET G578 44227338
W4 8203 DOMET 142Y 4ET

EPDs								
BW	WW	YW	Milk	MV	YSC	REA	MARB	CHB
3.4	65	103	33	65	1.2	0.45	0.08	120
PERFORMANCE			PIGMENT					
BW	Adj. WW	Adj. YW	Left Eye	Right Eye				
69	716	1212	100	100				



W4 108E SENSATIONAL AIR K782

DOB: 12/5/2022 Bull 44466565 Tattoo: K782 Polled

UPS SENSATION 2296 ET
W4 2296 SENSATION 108E P43852998
TOWNER PHYLLIS 20B ET
BR BELLE AIR 6011
W4 6011 MS BELLE AIR F552 44174132
F MS LIGHTS OUT 449

EPDs								
BW	WW	YW	Milk	MV	YSC	REA	MARB	CHB
1.8	61	102	37	68	1.4	0.6	0.27	136
PERFORMANCE			PIGMENT					
BW	Adj. WW	Adj. YW	Left Eye	Right Eye				
65	733	1385	60	100				



9 | W4 108E SENSATIONAL AIR K782



W4 108E SENSATION K785

DOB: 12/15/2022 Bull 44586919 Tattoo: K785 Polled

UPS SENSATION 2296 ET
W4 2296 SENSATION 108E P43852998
TOWNER PHYLLIS 20B ET
CL 1 DOMINO 193Y 1ET
W4 193Y DOMET E053 43986864
W4 W168 DOMET Z530

EPDs								
BW	WW	YW	Milk	MV	YSC	REA	MARB	CHB
2.5	48	81	33	57	0.7	0.5	0.05	115
PERFORMANCE			PIGMENT					
BW	Adj. WW	Adj. YW	Left Eye	Right Eye				
72	714	1306	100	100				





W4 108E SENSATION K786

DOB: 12/17/2022 Bull 44587037 Tattoo: K786 Scurred

UPS SENSATION 2296 ET
W4 2296 SENSATION 108E P43852998
TOWNER PHYLLIS 20B ET
RCR L1 AURUM DOMINO 08120
B LADY GOLD 5006C 43724449
B MISS RIBSTONE 114Y

EPDs								
BW	WW	YW	Milk	MV	YSC	REA	MARB	CHB
2.6	55	91	27	55	0.8	0.55	0.12	119
PERFORMANCE			PIGMENT					
BW	Adj. WW	Adj. YW	Left Eye	Right Eye				
71	715	1334	100	100				



11 | W4 108E SENSATION K786



W4 107G ADVANCE DOM K501

DOB: 9/1/2022 Bull 44582670 Tattoo: K501 Horned

CL 1 DOMINO 7195E
W4 7195 ADVANCE DOM 107G ET 44189991
H CCC MS 1068Y ADVANCE 4431 ET
UPS ADVANCE 2622
B UP MISS ADVANCE 565C 43724345
B LADY FOURS 226Z

EPDs								
BW	WW	YW	Milk	MV	YSC	REA	MARB	CHB
1.5	47	78	28	51	0.9	0.37	0.09	120
PERFORMANCE			PIGMENT					
BW	Adj. WW	Adj. YW	Left Eye	Right Eye				
62	585	1273	85	100				



12 | W4 107G ADVANCE DOM K501



W4 392A MR BEEF K503

DOB: 9/1/2022 Bull 44582432 Tattoo: K503 Horned

CL 1 DOMINO 0141 1ET
DH DOMINO 392A 43459361
DH MISS ADVANCE 9156
CHURCHILL SENSATION 028X
CHURCHILL LADY 3261A ET 43491517
CHURCHILL LADY 715T

EPDs								
BW	WW	YW	Milk	MV	YSC	REA	MARB	CHB
0.6	51	84	32	58	1.1	0.5	0.04	113
PERFORMANCE			PIGMENT					
BW	Adj. WW	Adj. YW	Left Eye	Right Eye				
70	589	1263	100	100				



www.w4ranch.com



W4 392A MR BEEF K505

DOB: 9/5/2022 Bull 44581139 Tattoo: K505 Horned

CL 1 DOMINO 0141 1ET
DH DOMINO 392A 43459361
DH MISS ADVANCE 9156
CL 1 DOMINO 420B 1ET
HH MISS ADVANCE 7041E 43786146
HH MISS ADVANCE 4155B

EPDs								
BW	WW	YW	Milk	MV	YSC	REA	MARB	CHB
1.4	56	89	31	59	0.9	0.32	0.05	105
PERFORMANCE			PIGMENT					
BW	Adj. WW	Adj. YW	Left Eye	Right Eye				
63	627	1241	100	100				



14 | W4 392A MR BEEF K505



W4 106D HOMETOWN K513

DOB: 9/7/2022 Bull 44578343 Tattoo: K513 Horned

C 10Y HOMETOWN 4108
W4 4108 HOMETOWN 106D ET 43742956
HH MISS ADVANCE 9168W
CL 1 DOMINO 338A
MISS DOMINO M529 43597523
MISS DOMINO M432

EPDs								
BW	WW	YW	Milk	MV	YSC	REA	MARB	CHB
3.5	40	67	28	48	1	0.23	0.13	112
PERFORMANCE			PIGMENT					
BW	Adj. WW	Adj. YW	Left Eye	Right Eye				
74	552	1191	75	15				



15 | W4 106D HOMETOWN K513



W4 F684 MR BEEF K514

DOB: 9/11/2022 Bull 44581146 Tattoo: K514 Horned

DH DOMINO 392A
W4 392A MR BEEF F684 44172296
W4 955 MAGGIE 134Y ET
RCR L1 AURUM DOMINO 08120
MISS AURUM 339A 43453821
B MISS ADVANCE 2001M

EPDs								
BW	WW	YW	Milk	MV	YSC	REA	MARB	CHB
2.2	48	81	28	51	1	0.32	0.04	107
PERFORMANCE			PIGMENT					
BW	Adj. WW	Adj. YW	Left Eye	Right Eye				
72	641	1253	100	100				



16 | W4 F684 MR BEEF K514



W4 9101 BELLE AIR K515

DOB: 9/23/2022 Bull 44581841 Tattoo: K515 Horned

BR BELLE AIR 6011
C 4038 BELLE AIR 9101 ET 44019153
C 105Y LADY DOMINO 4038
HH ADVANCE 1246Y
IMR 1246Y MISS ADVANCE 5068C 43582229
IMR T025 DOMINETTE 9015W

EPDs								
BW	WW	YW	Milk	MV	YSC	REA	MARB	CHB
2.5	58	89	31	60	1.1	0.42	0.21	129
PERFORMANCE			PIGMENT					
BW	Adj. WW	Adj. YW	Left Eye	Right Eye				
62	617	1312	90	90				



W4 9101 BELLE AIR K517

DOB: 9/10/2022 Bull 44581138 Tattoo: K517 Horned

BR BELLE AIR 6011
C 4038 BELLE AIR 9101 ET 44019153
C 105Y LADY DOMINO 4038
CHURCHILL SENSATION 028X
W4 028 DOMET A013 43513576
CHURCHILL LADY 1168Y ET

EPDs								
BW	WW	YW	Milk	MV	YSC	REA	MARB	CHB
2.5	58	90	38	67	1.3	0.38	0.24	119
PERFORMANCE			PIGMENT					
BW	Adj. WW	Adj. YW	Left Eye	Right Eye				
66	659	1276	100	100				



18 | W4 9101 BELLE AIR K517



W4 106D HOMETOWN K518

DOB: 10/9/2022 Bull 44582430 Tattoo: K518 Horned

C 10Y HOMETOWN 4108
W4 4108 HOMETOWN 106D ET 43742956
HH MISS ADVANCE 9168W
CL 1 DOMINO 072X
B 72X DOMINETTE 566C 43724346
B 5110 DOMINETTE 299Z

EPDs								
BW	WW	YW	Milk	MV	YSC	REA	MARB	CHB
3	50	79	30	55	1.2	0.4	0.17	122
PERFORMANCE			PIGMENT					
BW	Adj. WW	Adj. YW	Left Eye	Right Eye				
72	652	1353	100	100				



W4 108E SENSATION K522

DOB: 9/9/2022 Bull 44588484 Tattoo: K522 Horned

UPS SENSATION 2296 ET
W4 2296 SENSATION 108E P43852998
TOWNER PHYLLIS 20B ET
HH ADVANCE 8203U ET
W4 8203 DOMET A516 43517287
W4 8055 LADY N210

EPDs								
BW	WW	YW	Milk	MV	YSC	REA	MARB	CHB
3.5	50	81	25	50	0.6	0.47	0.1	118
PERFORMANCE			PIGMENT					
BW	Adj. WW	Adj. YW	Left Eye	Right Eye				
75	585	1257	60	50				



20 | W4 108E SENSATION K522



W4 F684 MR BEEF K527

DOB: 10/13/2022 Bull 44582674 Tattoo: K527 Horned

DH DOMINO 392A
W4 392A MR BEEF F684 44172296
W4 955 MAGGIE 134Y ET
HH ADVANCE 1006Y ET
DH L1 DOMINETTE 453 43484749
DH L1 DOMINETTE 067

EPDs								
BW	WW	YW	Milk	MV	YSC	REA	MARB	CHB
2.9	61	99	27	58	1.2	0.42	0.01	107
PERFORMANCE			PIGMENT					
BW	Adj. WW	Adj. YW	Left Eye	Right Eye				
68	686	1404	100	50				



W4 G025 NIGHTCAP K538

DOB: 9/15/2022 Bull 44588286 Tattoo: K538 Horned

CHURCHILL NIGHTCAP 7256E
W4 NIGHTCAP G025 44226528
CHURCHILL LADY 7200E
FS ADVANCE 649D
W4 649D MISS ADVANCE G126 44588154
HH MISS ADVANCE 7282E

EPDs								
BW	WW	YW	Milk	MV	YSC	REA	MARB	CHB
2.2	57	97	27	56	0.8	0.53	0.12	130
PERFORMANCE			PIGMENT					
BW	Adj. WW	Adj. YW	Left Eye	Right Eye				
68	660	1295	100	100				



W4 G025 NIGHTCAP K543

DOB: 11/20/2022 Bull 44581372 Tattoo: K543 Horned

CHURCHILL NIGHTCAP 7256E
W4 NIGHTCAP G025 44226528
CHURCHILL LADY 7200E
W4 2296 SENSATION 108E
W4 108E ROOSTER H124 44326774
W4 6213 DOMET 9521 ET 6

EPDs								
BW	WW	YW	Milk	MV	YSC	REA	MARB	CHB
3.7	67	110	31	64	0.7	0.64	0.13	126
PERFORMANCE			PIGMENT					
BW	Adj. WW	Adj. YW	Left Eye	Right Eye				
69	818	1361	100	100				



W4 F633 MR BEEF K546

DOB: 9/20/2022 Bull 44581294 Tattoo: K546 Horned

DH DOMINO 392A
W4 392A MR BEEF F633 44147922
DHR LADY SENSATION GO BOB 493
CL 1 DOMINO 072X
B 72X DOMINETTE 477B 43620918
B MISTY ROBIN 167Y

EPDs								
BW	WW	YW	Milk	MV	YSC	REA	MARB	CHB
2.4	53	83	28	55	1	0.36	0.13	114
PERFORMANCE			PIGMENT					
BW	Adj. WW	Adj. YW	Left Eye	Right Eye				
67	644	1299	55	25				



W4 392A MR BEEF K550

DOB: 9/14/2022 Bull 44581131 Tattoo: K550 Horned

CL 1 DOMINO 0141 1ET
DH DOMINO 392A 43459361
DH MISS ADVANCE 9156
HH ADVANCE 5044C ET
CHURCHILL LADY 7115E 43801945
CHURCHILL LADY 4222B



25 | W4 392A MR BEEF K550

EPDs								
BW	WW	YW	Milk	MV	YSC	REA	MARB	CHB
2.1	61	102	34	65	1.2	0.47	0.02	112
PERFORMANCE			PIGMENT					
BW	Adj. WW	Adj. YW	Left Eye	Right Eye				
68	604	1315	100	50				



26 | W4 392A MR BEEF K556

Straight Cooper/Holden L1 pedigree here. Long bodied and powerful bull with an extra cool look.



SIRE OF LOT 26 | DH DOMINO 392A



W4 392A MR BEEF K556

DOB: 9/16/2022 Bull 44581151 Tattoo: K556 Horned

CL 1 DOMINO 0141 1ET
DH DOMINO 392A 43459361
DH MISS ADVANCE 9156
HH ADVANCE 3297A ET
HH MISS ADVANCE 7163E 43786457
HH MISS ADVANCE 2031Z ET

EPDs								
BW	WW	YW	Milk	MV	YSC	REA	MARB	CHB
3	65	109	33	66	1.1	0.6	0.01	119
PERFORMANCE			PIGMENT					
BW	Adj. WW	Adj. YW	Left Eye	Right Eye				
68	715	1343	0	100				





W4 F633 MR BEEF K567

DOB: 9/19/2022 Bull 44579114 Tattoo: K567 Horned

DH DOMINO 392A
W4 392A MR BEEF F633 44147922
DHR LADY SENSATION GO BOB 493
CL 1 DOMINO 193Y 1ET
MISS L1 DOMINO M 420 43514144
MISS DOMINO M212

EPDs								
BW	WW	YW	Milk	MV	YSC	REA	MARB	CHB
1.7	43	69	29	51	0.7	0.28	0.01	101
PERFORMANCE			PIGMENT					
BW	Adj. WW	Adj. YW	Left Eye	Right Eye				
68	632	1230	100	100				



W4 0021 COFFEE DOM K570

DOB: 9/10/2022 Bull 44586917 Tattoo: K570 Horned

NJW LONG HAUL 36E ET
RCR LONG COFFEE 20021 P44119843
RCR MS COFFEE 3027 17723 ET
CL 1 DOMINO 7195E
W4 7195 LADY DOMET H046 44328293
CHURCHILL LADY 2139Z ET

EPDs								
BW	WW	YW	Milk	MV	YSC	REA	MARB	CHB
1.6	59	94	33	63	1.2	0.41	0.17	130
PERFORMANCE			PIGMENT					
BW	Adj. WW	Adj. YW	Left Eye	Right Eye				
66	622	1275	100	100				



W4 392A MR BEEF K574

DOB: 9/21/2022 Bull 44581147 Tattoo: K574 Horned

CL 1 DOMINO 0141 1ET
DH DOMINO 392A 43459361
DH MISS ADVANCE 9156
D DOMINATOR 25Z
B LADY GOLD 448B 43622717
B 5110 DOMINETTE 299Z

EPDs								
BW	WW	YW	Milk	MV	YSC	REA	MARB	CHB
2.6	57	88	32	60	0.9	0.47	0	108
PERFORMANCE			PIGMENT					
BW	Adj. WW	Adj. YW	Left Eye	Right Eye				
70	698	1318	50	25				



29 | W4 392A MR BEEF K574



W4 F613 ROGER K581

DOB: 9/14/2022 Bull 44581329 Tattoo: K581 Horned

SR DIABLO 613A
W4 DIABLO ROGER F613 44113970
F 032X DOMINETTE 458
FS ADVANCE 3001A ET
W4 3001 MS ADVANCE D641 43872910
W4 S025 DOMET A123

EPDs								
BW	WW	YW	Milk	MV	YSC	REA	MARB	CHB
3.3	55	88	32	60	1.5	0.6	0.04	121
PERFORMANCE			PIGMENT					
BW	Adj. WW	Adj. YW	Left Eye	Right Eye				
78	606	1268	30	100				



30 | W4 F613 ROGER K581



W4 392A MR BEEF K582

DOB: 9/24/2022 Bull 44582668 Tattoo: K582 Horned

CL 1 DOMINO 0141 1ET
DH DOMINO 392A 43459361
DH MISS ADVANCE 9156
CL 1 DOMINO 052X 1ET
B MISS 052X DOMINETTE 472B 43506881
B ROXANNE 727T

EPDs								
BW	WW	YW	Milk	MV	YSC	REA	MARB	CHB
2.2	55	90	31	59	0.8	0.45	0.03	109
PERFORMANCE			PIGMENT					
BW	Adj. WW	Adj. YW	Left Eye	Right Eye				
71	642	1320	75	100				



31 | W4 392A MR BEEF K582



W4 1600 SENSATION K585

DOB: 9/25/2022 Bull 44581266 Tattoo: K585 Horned

CHURCHILL SENSATION 028X
KGB TFR KR SENSATION 028X 1600 43772981
H LAYLA 3521
B EXCEL 20 ET
B LADY EXCEL 570C 43724390
B LADY EXCEL 517

EPDs								
BW	WW	YW	Milk	MV	YSC	REA	MARB	CHB
2	49	81	32	56	1.1	0.24	0.16	110
PERFORMANCE			PIGMENT					
BW	Adj. WW	Adj. YW	Left Eye	Right Eye				
64	621	1299	95	60				



*Thank you for your interest
in our program!*



W4 F613 TOP ROGER K590

DOB: 10/21/2022 Bull 44581301 Tattoo: K590 Horned

SR DIABLO 613A
W4 DIABLO ROGER F613 44113970
F 032X DOMINETTE 458
CHURCHILL TOP SPEED 548C ET
W4 548 TOP DOMET E710 44059908
W4 955 MAGGIE 134Y ET

EPDs								
BW	WW	YW	Milk	MV	YSC	REA	MARB	CHB
4.3	62	102	34	65	1.5	0.8	0.03	126
PERFORMANCE			PIGMENT					
BW	Adj. WW	Adj. YW	Left Eye	Right Eye				
74	747	1318	100	100				



33 | W4 F613 TOP ROGER K590



W4 108E SENSATION K595

DOB: 9/24/2022 Bull 44586912 Tattoo: K595 Horned

UPS SENSATION 2296 ET
W4 2296 SENSATION 108E P43852998
TOWNER PHYLLIS 20B ET
C BAILEES MILES 4312 ET
W4 4312 BAILEE F662 44174217
W4 6058 DOMET Y611

EPDs								
BW	WW	YW	Milk	MV	YSC	REA	MARB	CHB
3.8	59	96	30	60	0.6	0.6	0.13	121
PERFORMANCE			PIGMENT					
BW	Adj. WW	Adj. YW	Left Eye	Right Eye				
68	675	1351	100	100				



W4 F633 MR BEEF K598

DOB: 9/25/2022 Bull 44586914 Tattoo: K598 Horned

DH DOMINO 392A
W4 392A MR BEEF F633 44147922
DHR LADY SENSATION GO BOB 493
LBH 157K RIBSTONE ET 19T
B LADY RIBSTONE 406B 43620831
B LADY GOLD 205Z

EPDs								
BW	WW	YW	Milk	MV	YSC	REA	MARB	CHB
2.3	53	83	28	54	0.9	0.43	0.07	106
PERFORMANCE			PIGMENT					
BW	Adj. WW	Adj. YW	Left Eye	Right Eye				
66	639	1262	0	15				



W4 7177 DOMINO K602

DOB: 10/3/2022 Bull 44581379 Tattoo: K602 Horned

CL1 DOMINO 5191C 1ET
CL 1 DOMINO 7177E 43800276
CL1 DOMINETTE 5201C 1ET
W4 860 DOMINO A311
W4 A311 DOMIND616 43833901
W4 8203 DOMET A516

EPDs								
BW	WW	YW	Milk	MV	YSC	REA	MARB	CHB
3	60	92	25	55	1.1	0.34	0.1	107
PERFORMANCE			PIGMENT					
BW	Adj. WW	Adj. YW	Left Eye	Right Eye				
67	663	1318	100	100				



W4 E030 MR BEEF K610

DOB: 9/25/2022 Bull 44579119 Tattoo: K610 Horned

DH DOMINO 392A
W4 392A MR BEEF E030 43852398
W4 0387 DOMET B183
CHURCHILL DOMINO 166Y
W4 166Y DOMET E072 43986938
W4 4011 DOMET T127

EPDs								
BW	WW	YW	Milk	MV	YSC	REA	MARB	CHB
3.8	40	71	31	51	0.9	0.22	0.05	106
PERFORMANCE			PIGMENT					
BW	Adj. WW	Adj. YW	Left Eye	Right Eye				
74	627	1315	70	90				



W4 E030 MR BEEF K604

DOB: 9/20/2022 Bull 44582661 Tattoo: K604 Horned

DH DOMINO 392A
W4 392A MR BEEF E030 43852398
W4 0387 DOMET B183
CHURCHILL DOMINO 166Y
W4 166Y DOMINO D712 43833931
W4 PRINCESS DOMET U317

EPDs								
BW	WW	YW	Milk	MV	YSC	REA	MARB	CHB
3.8	44	73	26	48	0.9	0.22	0.08	106
PERFORMANCE			PIGMENT					
BW	Adj. WW	Adj. YW	Left Eye	Right Eye				
75	626	1303	100	100				



W4 107G ADVANCE DOM K614

DOB: 9/25/2022 Bull 44582669 Tattoo: K614 Horned

CL 1 DOMINO 7195E
W4 7195 ADVANCE DOM 107G ET 44189991
H CCC MS 1068Y ADVANCE 4431 ET
H5 408 DOMINO 881
DH L1 DOMINETTE 480 43485034
DH L1 DOMINETTE 161

EPDs								
BW	WW	YW	Milk	MV	YSC	REA	MARB	CHB
1.7	44	74	25	47	1.1	0.2	0.11	114
PERFORMANCE			PIGMENT					
BW	Adj. WW	Adj. YW	Left Eye	Right Eye				
70	544	1328	100	100				



W4 107G DOMINO K621

DOB: 10/25/2022 Bull 44581844 Tattoo: K621 Horned

CL 1 DOMINO 7195E
W4 7195 ADVANCE DOM 107G ET 44189991
H CCC MS 1068Y ADVANCE 4431 ET
JA L1 DOMINO 1013Y
DH L1 DOMINETTE 487 43485029
DH L1 DOMINETTE 146

EPDs								
BW	WW	YW	Milk	MV	YSC	REA	MARB	CHB
2.5	52	78	27	53	0.9	0.33	0.07	116
PERFORMANCE			PIGMENT					
BW	Adj. WW	Adj. YW	Left Eye	Right Eye				
72	695	1251	100	100				



W4 1600 SENSATION K632

DOB: 9/29/2022 Bull 44586918 Tattoo: K632 Horned

CHURCHILL SENSATION 028X
KGB TFR KR SENSATION 028X 1600 43772981
H LAYLA 3521
CHURCHILL SENSATION 028X
CHURCHILL LADY 891F 43919960
CHURCHILL LADY 6247D

EPDs								
BW	WW	YW	Milk	MV	YSC	REA	MARB	CHB
0	51	79	42	68	1.6	0.39	0.25	114
PERFORMANCE			PIGMENT					
BW	Adj. WW	Adj. YW	Left Eye	Right Eye				
68	665	1323	0	40				



W4 4312 B MILES K637

DOB: 10/16/2022 Bull 44581135 Tattoo: K637 Horned

C MILES MCKEE 2103 ET
C BAILEES MILES 4312 ET 43487323
BR BAILEE 1066 ET
C PURE GOLD 6224 ET
W4 6224 DOMET A640 43517184
W4 058 DOMET N518

EPDs								
BW	WW	YW	Milk	MV	YSC	REA	MARB	CHB
4.6	52	90	27	53	0.8	0.46	0.15	124
PERFORMANCE			PIGMENT					
BW	Adj. WW	Adj. YW	Left Eye	Right Eye				
73	638	1390	100	90				



42 | W4 4312 B MILES K637



W4 392A MR BEEF K643

DOB: 10/1/2022 Bull 44582428 Tattoo: K643 Horned

CL 1 DOMINO 0141 1ET
DH DOMINO 392A 43459361
DH MISS ADVANCE 9156
C BAILEES MILES 4312 ET
W4 4312 MILES DOMET E755 44059740
B MISS 052X DOMINETTE 472B

EPDs								
BW	WW	YW	Milk	MV	YSC	REA	MARB	CHB
2.3	55	92	31	58	0.8	0.48	0.04	112
PERFORMANCE			PIGMENT					
BW	Adj. WW	Adj. YW	Left Eye	Right Eye				
68	592	1334	15	100				



W4 E030 MR BEEF K652

DOB: 11/1/2022 Bull 44581261 Tattoo: K652 Horned

DH DOMINO 392A
W4 392A MR BEEF E030 43852398
W4 0387 DOMET B183
CL 1 DOMINO 338A
W4 338A DOMET D598 43948403
W4 6058 DOMET A590

EPDs								
BW	WW	YW	Milk	MV	YSC	REA	MARB	CHB
2.4	43	71	35	56	1	0.29	0	106
PERFORMANCE			PIGMENT					
BW	Adj. WW	Adj. YW	Left Eye	Right Eye				
73	687	1336	100	100				



W4 E030 MR BEEF K654

DOB: 10/3/2022 Bull 44578341 Tattoo: K654 Horned

DH DOMINO 392A
W4 392A MR BEEF E030 43852398
W4 0387 DOMET B183
DVOR 665 9175 DOMINO 150
B LADY PATRICIA 425B 43620855
B 860 DOMINETTE 273Z

EPDs								
BW	WW	YW	Milk	MV	YSC	REA	MARB	CHB
0.8	40	67	30	50	0.9	0.21	0.02	98
PERFORMANCE			PIGMENT					
BW	Adj. WW	Adj. YW	Left Eye	Right Eye				
66	620	1267	100	100				



W4 0172 DOMINO K661

DOB: 10/15/2022 Bull 44581137 Tattoo: K661 Horned

CL 1 DOMINO 8117F 1ET
CHURCHILL DOMINO 0172H P44164067
CHURCHILL LADY 7189E ET
KGB TFR KR SENSATION 028X 1600
W4 MV 1600 MS ADVANCE G409 44062016
W4 8203 MS ADVANCE D733

EPDs								
BW	WW	YW	Milk	MV	YSC	REA	MARB	CHB
3.6	68	102	33	67	1.5	0.47	0.22	126
PERFORMANCE			PIGMENT					
BW	Adj. WW	Adj. YW	Left Eye	Right Eye				
70	784	1349	100	75				



46 | W4 0172 DOMINO K661



W4 1600 SENSATION K662

DOB: 9/13/2022 Bull 44581150 Tattoo: K662 Horned

CHURCHILL SENSATION 028X
KGB TFR KR SENSATION 028X 1600 43772981
H LAYLA 3521
W4 860 DOMINO A311
W4 A311 DOMET E721 44059917
W4 8203 DOMET 117Y ET

EPDs								
BW	WW	YW	Milk	MV	YSC	REA	MARB	CHB
2.9	55	86	34	61	1.1	0.4	0.07	108
PERFORMANCE			PIGMENT					
BW	Adj. WW	Adj. YW	Left Eye	Right Eye				
69	660	1345	95	95				



47 | W4 1600 SENSATION K662



W4 F684 MR BEEF K663

DOB: 10/25/2022 Bull 44581149 Tattoo: K663 Horned

DH DOMINO 392A
W4 392A MR BEEF F684 44172296
W4 955 MAGGIE 134Y ET
DH DOMINO 392A
W4 392A COWGIRL D515 43945651
C COWGIRL 7073

EPDs								
BW	WW	YW	Milk	MV	YSC	REA	MARB	CHB
2.9	60	101	33	63	1.3	0.54	-0.04	111
PERFORMANCE			PIGMENT					
BW	Adj. WW	Adj. YW	Left Eye	Right Eye				
70	686	1375	95	100				



48 | W4 F684 MR BEEF K663



W4 F684 MR BEEF K664

DOB: 9/24/2022 Bull 44586931 Tattoo: K664 Horned

DH DOMINO 392A
W4 392A MR BEEF F684 44172296
W4 955 MAGGIE 134Y ET
W4 4011 DOMINO T154
W4 T154 LADY DOMET B076 43508754
W4 4011 DOMETT147

EPDs								
BW	WW	YW	Milk	MV	YSC	REA	MARB	CHB
2.5	50	88	27	52	1.1	0.55	0.04	121
PERFORMANCE			PIGMENT					
BW	Adj. WW	Adj. YW	Left Eye	Right Eye				
73	622	1240	100	100				



49 | W4 F684 MR BEEF K664



W4 106D HOMETOWN K665

DOB: 11/2/2022 Bull 44581271 Tattoo: K665 Horned

C 10Y HOMETOWN 4108
W4 4108 HOMETOWN 106D ET 43742956
HH MISS ADVANCE 9168W
B EXCEL 20 ET
B LADY EXCELL 421B 43621159
B 629 ADVANCETTE 3000N

EPDs								
BW	WW	YW	Milk	MV	YSC	REA	MARB	CHB
3.2	43	76	26	48	0.8	0.21	0.18	115
PERFORMANCE			PIGMENT					
BW	Adj. WW	Adj. YW	Left Eye	Right Eye				
75	690	1336	100	100				



50 | W4 106D HOMETOWN K665



W4 F613 DIABLO ROGER K672

DOB: 10/10/2022 Bull 44586930 Tattoo: K672 Horned

SR DIABLO 613A
W4 DIABLO ROGER F613 44113970
F 032X DOMINETTE 458
F REST EASY 847
F MS REST EASY 432 43468735
F MS 765 RIBSTONE 916

EPDs								
BW	WW	YW	Milk	MV	YSC	REA	MARB	CHB
3.7	55	92	34	62	1.5	0.53	0.06	113
PERFORMANCE			PIGMENT					
BW	Adj. WW	Adj. YW	Left Eye	Right Eye				
75	644	1352	100	100				



51 | W4 F613 DIABLO ROGER K672



W4 108E SENSATION K675

DOB: 10/15/2022 Bull 44569438 Tattoo: K675 Horned

UPS SENSATION 2296 ET
W4 2296 SENSATION 108E P43852998
TOWNER PHYLLIS 20B ET
CL 1 DOMINO 6128D 1ET
CHURCHILL LADY 9146G 44044181
CHURCHILL LADY 5168C

EPDs								
BW	WW	YW	Milk	MV	YSC	REA	MARB	CHB
2.5	55	90	37	65	0.8	0.65	0.13	126
PERFORMANCE			PIGMENT					
BW	Adj. WW	Adj. YW	Left Eye	Right Eye				
69	668	1408	15	0				



W4 7177 DOMINO K676

DOB: 10/8/2022 Bull 44587033 Tattoo: K676 Horned

CL1 DOMINO 5191C 1ET
CL 1 DOMINO 7177E 43800276
CL1 DOMINETTE 5201C 1ET
CHURCHILL SENSATION 028X
B MISS SENSATIONAL 405B 43620830
B LADY FOURS 226Z

EPDs								
BW	WW	YW	Milk	MV	YSC	REA	MARB	CHB
1.2	58	89	31	61	1.4	0.35	0.17	111
PERFORMANCE			PIGMENT					
BW	Adj. WW	Adj. YW	Left Eye	Right Eye				
70	652	1348	100	100				



W4 7177 DOMINO K678

DOB: 10/25/2022 Bull 44581143 Tattoo: K678 Horned

CL1 DOMINO 5191C 1ET
CL 1 DOMINO 7177E 43800276
CL1 DOMINETTE 5201C 1ET
DB 5216 DOM 0387
W4 0387 DOMET E159 43986630
W4 102Y DOMET A017

EPDs								
BW	WW	YW	Milk	MV	YSC	REA	MARB	CHB
3	62	98	29	60	1.3	0.37	0.15	110
PERFORMANCE			PIGMENT					
BW	Adj. WW	Adj. YW	Left Eye	Right Eye				
66	696	1400	100	100				



54 | W4 7177 DOMINO K678



W4 064 BELLE HEIR K681

DOB: 10/12/2022 Bull 44588288 Tattoo: K681 Horned

C CJC BELLE HEIR ET
CHURCHILL BELLE HEIR 064H 44149873
CHURCHILL LADY 897F ET
CL 1 DOMINO 7195E
W4 7195 DOMET G033 44588151
W4 502Y MS ADVANCE D592

EPDs								
BW	WW	YW	Milk	MV	YSC	REA	MARB	CHB
2.8	59	95	27	56	1.2	0.62	0.15	137
PERFORMANCE			PIGMENT					
BW	Adj. WW	Adj. YW	Left Eye	Right Eye				
65	709	1350	100	100				



55 | W4 064 BELLE HEIR K681



W4 4312 B MILES K686

DOB: 10/11/2022 Bull 44586916 Tattoo: K686 Horned

C MILES MCKEE 2103 ET
C BAILEES MILES 4312 ET 43487323
BR BAILEE 1066 ET
W4 592 DOMINO 102Y ET
W4 102Y DOMET A018 43519822
W4 S025 DOMET W577

EPDs								
BW	WW	YW	Milk	MV	YSC	REA	MARB	CHB
4.8	56	89	26	54	0.6	0.48	0.14	120
PERFORMANCE			PIGMENT					
BW	Adj. WW	Adj. YW	Left Eye	Right Eye				
68	667	1363	100	90				



W4 1600 SENSATION K691

DOB: 10/14/2022 Bull 44586941 Tattoo: K691 Horned

CHURCHILL SENSATION 028X
KGB TFR KR SENSATION 028X 1600 43772981
H LAYLA 3521
B 295 DOMINO 6058
W4 6058 DOMET D594 43834483
W4 522 DOMET W704

EPDs								
BW	WW	YW	Milk	MV	YSC	REA	MARB	CHB
2.9	59	93	31	61	1.1	0.37	0.14	111
PERFORMANCE			PIGMENT					
BW	Adj. WW	Adj. YW	Left Eye	Right Eye				
68	676	1377	15	100				



57 | W4 1600 SENSATION K691



W4 064 BELLE HEIR K701

DOB: 10/15/2022 Bull 44579148 Tattoo: K701 Horned

C CJC BELLE HEIR ET
CHURCHILL BELLE HEIR 064H 44149873
CHURCHILL LADY 897F ET
DB 5216 DOM 0387
W4 0387 DOMET G167 44227378
W4 W219 BANKER C109

EPDs								
BW	WW	YW	Milk	MV	YSC	REA	MARB	CHB
2.5	52	87	29	55	1.2	0.62	0.12	127
PERFORMANCE			PIGMENT					
BW	Adj. WW	Adj. YW	Left Eye	Right Eye				
65	697	1285	100	100				



W4 F684 MR BEEF K705

DOB: 10/18/2022 Bull 44586934 Tattoo: K705 Horned

DH DOMINO 392A
W4 392A MR BEEF F684 44172296
W4 955 MAGGIE 134Y ET
FS ADVANCE 1123Y
W4 1123 DOMET B008 43605030
W4 4011 DOMET Y507

EPDs								
BW	WW	YW	Milk	MV	YSC	REA	MARB	CHB
3.2	57	95	29	58	1.1	0.52	0.01	117
PERFORMANCE			PIGMENT					
BW	Adj. WW	Adj. YW	Left Eye	Right Eye				
69	681	1303	100	100				



59 | W4 F684 MR BEEF K705



W4 9101 BELLE AIR K710

DOB: 12/2/2022 Bull 44581292 Tattoo: K710 Horned

BR BELLE AIR 6011
C 4038 BELLE AIR 9101 ET 44019153
C 105Y LADY DOMINO 4038
GB L1 DOMINO 177R
IMR L1 177R DOMINETTE 5028C ET 43603507
HH MISS ADVANCE 4164P ET

EPDs								
BW	WW	YW	Milk	MV	YSC	REA	MARB	CHB
2.2	59	90	32	61	1	0.37	0.26	124
PERFORMANCE			PIGMENT					
BW	Adj. WW	Adj. YW	Left Eye	Right Eye				
68	711	1210	100	40				



W4 F633 MR BEEF K711

DOB: 12/3/2022 Bull 44581299 Tattoo: K711 Horned

DH DOMINO 392A
W4 392A MR BEEF F633 44147922
DHR LADY SENSATION GO BOB 493
JA L1 DOMINO 1013Y
DH L1 DOMINETTE 486 43485016
DH L1 DOMINETTE 126

EPDs								
BW	WW	YW	Milk	MV	YSC	REA	MARB	CHB
2.1	53	83	27	53	0.8	0.35	0.03	105
PERFORMANCE			PIGMENT					
BW	Adj. WW	Adj. YW	Left Eye	Right Eye				
70	710	1353	20	20				



W4 107G ADVANCE DOM K712

DOB: 10/25/2022 Bull 44586915 Tattoo: K712 Horned

CL 1 DOMINO 7195E
W4 7195 ADVANCE DOM 107G ET 44189991
H CCC MS 1068Y ADVANCE 4431 ET
JA L1 DOMINO 1000Y
DH L1 DOMINETTE 4138 43504161
JA L1 DOMINETTE 218M

EPDs								
BW	WW	YW	Milk	MV	YSC	REA	MARB	CHB
2.8	55	88	26	54	1	0.34	0.05	116
PERFORMANCE			PIGMENT					
BW	Adj. WW	Adj. YW	Left Eye	Right Eye				
62	726	1290	100	100				





W4 G025 NIGHTCAP K713

DOB: 12/14/2022 Bull 44581878 Tattoo: K713 Horned

CHURCHILL NIGHTCAP 7256E
W4 NIGHTCAP G025 44226528
CHURCHILL LADY 7200E
W4 4108 HOMETOWN 106D ET
W4 106D MS HOMETOWN F549 44174168
W4 338A DOMET D598

EPDs								
BW	WW	YW	Milk	MV	YSC	REA	MARB	CHB
4.2	64	106	32	64	1	0.49	0.14	124
PERFORMANCE			PIGMENT					
BW	Adj. WW	Adj. YW	Left Eye	Right Eye				
65	775	1349	100	40				



63 | W4 G025 NIGHTCAP K713



W4 F613 DIABLO ROGER K716

DOB: 10/26/2022 Bull 44586942 Tattoo: K716 Horned

SR DIABLO 613A
W4 DIABLO ROGER F613 44113970
F 032X DOMINETTE 458
DB 5216 DOM 0387
W4 0387 DOMINO D520 43946252
W4 8203 DOMET 144Y 4ET

EPDs								
BW	WW	YW	Milk	MV	YSC	REA	MARB	CHB
4.4	63	99	30	62	1.7	0.62	0.08	118
PERFORMANCE			PIGMENT					
BW	Adj. WW	Adj. YW	Left Eye	Right Eye				
68	695	1219	100	100				



W4 F613 DIABLO ROGER K718

DOB: 11/1/2022 Bull 44586913 Tattoo: K718 Horned

SR DIABLO 613A
W4 DIABLO ROGER F613 44113970
F 032X DOMINETTE 458
CL 1 DOMINO 6975
MISS DOMINO M320 43417356
MISS DOMINO M104

EPDs								
BW	WW	YW	Milk	MV	YSC	REA	MARB	CHB
3.8	53	85	27	53	1.3	0.51	0.06	114
PERFORMANCE			PIGMENT					
BW	Adj. WW	Adj. YW	Left Eye	Right Eye				
72	643	1274	100	100				



W4 7177 DOMINO K721

DOB: 12/5/2022 Bull 44581873 Tattoo: K721 Horned

CL1 DOMINO 5191C 1ET
CL 1 DOMINO 7177E 43800276
CL1 DOMINETTE 5201C 1ET
W4 955 DOMINO 136Y 2ET
W4 136Y DOMINO D722 43765103
W4 6231 DOMET Z556

EPDs								
BW	WW	YW	Milk	MV	YSC	REA	MARB	CHB
2.3	61	93	29	59	1.2	0.46	0.17	123
PERFORMANCE			PIGMENT					
BW	Adj. WW	Adj. YW	Left Eye	Right Eye				
68	725	1290	100	20				



W4 E030 MR BEEF K728

DOB: 10/31/2022 Bull 44586929 Tattoo: K728 Scurred

DH DOMINO 392A
W4 392A MR BEEF E030 43852398
W4 0387 DOMET B183
B FOREMOST 24C
W4 24C MS BERRY E121 43986837
B 52X DOMINETTE 5003C

EPDs								
BW	WW	YW	Milk	MV	YSC	REA	MARB	CHB
2.8	48	79	31	55	1	0.33	0.08	105
PERFORMANCE			PIGMENT					
BW	Adj. WW	Adj. YW	Left Eye	Right Eye				
65	704	1242	50	50				



67 | W4 E030 MR BEEF K728



W4 E030 MR BEEF K732

DOB: 11/20/2022 Bull 44581375 Tattoo: K732 Horned

DH DOMINO 392A
W4 392A MR BEEF E030 43852398
W4 0387 DOMET B183
CL 1 DOMINO 193Y 1ET
MISS DOMINO M407B 43514128
MISS DOMINO M909

EPDs								
BW	WW	YW	Milk	MV	YSC	REA	MARB	CHB
2.6	38	68	30	50	0.9	0.21	0	100
PERFORMANCE			PIGMENT					
BW	Adj. WW	Adj. YW	Left Eye	Right Eye				
68	653	1318	95	95				



"As a Superior representative, I marketed over 30,000 calves in the Spring of 2024. The calves were sired by W4 Hereford bulls and were my highest weighing calves and generated the highest price for me. The steers shipped on June 4th weighing an average of 1,003 lbs and sold for \$232.50/cwt. The calves were 13-15 months old and were off of Brangus cows, owned by Santa

Clara Ranch, who had purchased their bulls from W4. The calves were loaded with bone and really grew into their frame structure. They were high quality and really put the heterosis to work.

Will Yeager, Superior Livestock Auction representative
979/219-0483



W4 G025 NIGHTCAP K737

DOB: 10/20/2022 Bull 44588287 Tattoo: K737 Horned

CHURCHILL NIGHTCAP 7256E
W4 NIGHTCAP G025 44226528
CHURCHILL LADY 7200E
CL 1 DOMINO 7177E
W4 7177 DOMET G027 44588150
W4 W219 LADY BANKER D621

EPDs								
BW	WW	YW	Milk	MV	YSC	REA	MARB	CHB
3.4	67	111	31	64	1	0.54	0.17	128
PERFORMANCE			PIGMENT					
BW	Adj. WW	Adj. YW	Left Eye	Right Eye				
70	753	1196	100	100				



69 | W4 G025 NIGHTCAP K737



W4 0021 COFFEE DOM K740

DOB: 12/14/2022 Bull 44581836 Tattoo: K740 Horned

NJW LONG HAUL 36E ET
RCR LONG COFFEE 20021 P44119843
RCR MS COFFEE 3027 17723 ET
CL 1 DOMINO 7195E
W4 7195 DOMET G518 44227324
W4 870 DOMET Z028

EPDs								
BW	WW	YW	Milk	MV	YSC	REA	MARB	CHB
2.3	63	99	31	62	1.2	0.44	0.11	126
PERFORMANCE			PIGMENT					
BW	Adj. WW	Adj. YW	Left Eye	Right Eye				
64	716	1414	100	100				



W4 F684 MR BEEF K742

DOB: 11/18/2022 Bull 44582667 Tattoo: K742 Horned

DH DOMINO 392A
W4 392A MR BEEF F684 44172296
W4 955 MAGGIE 134Y ET
CO L1 DOMINO 076X
DH L1 DOMINETTE 428 43485055
DH L1 DOMINETTE 608S

EPDs								
BW	WW	YW	Milk	MV	YSC	REA	MARB	CHB
2.2	49	83	26	51	1	0.35	0.01	106
PERFORMANCE			PIGMENT					
BW	Adj. WW	Adj. YW	Left Eye	Right Eye				
70	653	1322	100	100				



W4 392A MR BEEF K743

DOB: 11/24/2022 Bull 44581144 Tattoo: K743 Horned

CL 1 DOMINO 0141 1ET
DH DOMINO 392A 43459361
DH MISS ADVANCE 9156
CL 1 DOMINO 333A
HH MISS ADVANCE 7259E 43786337
L1 DOMINETTE 07427

EPDs								
BW	WW	YW	Milk	MV	YSC	REA	MARB	CHB
2.3	57	91	30	58	1	0.49	0.03	106
PERFORMANCE			PIGMENT					
BW	Adj. WW	Adj. YW	Left Eye	Right Eye				
66	699	1353	75	90				



72 | W4 392A MR BEEF K743



W4 0172 JAKE DOM K746

DOB: 11/20/2022 Bull 44582434 Tattoo: K746 Horned

CL 1 DOMINO 8117F 1ET
CHURCHILL DOMINO 0172H P44164067
CHURCHILL LADY 7189E ET
W4 1326 HARD EIGHT 101D ET
W4 101D LADY JAKE H079 44328277
W4 1123 DOMET B021

EPDs								
BW	WW	YW	Milk	MV	YSC	REA	MARB	CHB
2.8	57	89	30	58	1.2	0.45	0.2	127
PERFORMANCE			PIGMENT					
BW	Adj. WW	Adj. YW	Left Eye	Right Eye				
65	698	1426	100	100				



W4 392A MR BEEF K750

DOB: 11/14/2022 Bull 44587036 Tattoo: K750 Horned

CL 1 DOMINO 0141 1ET
DH DOMINO 392A 43459361
DH MISS ADVANCE 9156
W4 S109 ADVANCE 502Y ET
W4 502Y ADVANCE D635 43946258
W4 6213 DOMET 9521 ET 6

EPDs								
BW	WW	YW	Milk	MV	YSC	REA	MARB	CHB
2.7	55	92	28	55	0.7	0.51	-0.04	108
PERFORMANCE			PIGMENT					
BW	Adj. WW	Adj. YW	Left Eye	Right Eye				
63	671	1355	100	100				



W4 9101 BELLE AIR K759

DOB: 12/5/2022 Bull 44582665 Tattoo: K759 Horned

BR BELLE AIR 6011
C 4038 BELLE AIR 9101 ET 44019153
C 105Y LADY DOMINO 4038
CL 1 DOMINO 5110C
HH MISS ADVANCE 7171E ET 43786262
HH MISS ADVANCE 1126Y

EPDs								
BW	WW	YW	Milk	MV	YSC	REA	MARB	CHB
3.5	64	99	35	67	1.4	0.4	0.24	128
PERFORMANCE			PIGMENT					
BW	Adj. WW	Adj. YW	Left Eye	Right Eye				
66	726	1339	90	100				



W4 F613 DIABLO ROGER K763

DOB: 11/25/2022 Bull 44586932 Tattoo: K763 Horned

SR DIABLO 613A
W4 DIABLO ROGER F613 44113970
F 032X DOMINETTE 458
W4 S109 ADVANCE 502Y ET
W4 502Y MS ADVANCE D592 43948496
B LADY OXLEY 747

EPDs								
BW	WW	YW	Milk	MV	YSC	REA	MARB	CHB
4	55	90	28	56	1.3	0.54	0.04	119
PERFORMANCE			PIGMENT					
BW	Adj. WW	Adj. YW	Left Eye	Right Eye				
74	690	1347	90	60				



76 | W4 F613 DIABLO ROGER K763



W4 E030 MR BEEF K773

DOB: 11/16/2022 Bull 44587035 Tattoo: K773 Horned

DH DOMINO 392A
W4 392A MR BEEF E030 43852398
W4 0387 DOMET B183
W4 592 DOMINO 102Y ET
W4 102Y RANCHER D516 43945643
AMH MISS 2998 281

EPDs								
BW	WW	YW	Milk	MV	YSC	REA	MARB	CHB
3.4	41	73	26	46	0.8	0.2	0.01	99
PERFORMANCE			PIGMENT					
BW	Adj. WW	Adj. YW	Left Eye	Right Eye				
72	586	1358	95	95				



W4 E030 MR BEEF K774

DOB: 11/22/2022 Bull 44587034 Tattoo: K774 Horned

DH DOMINO 392A
W4 392A MR BEEF E030 43852398
W4 0387 DOMET B183
FS ADVANCE 1120Y
W4 1120 DOMET B016 43605004
W4 6224 DOMET Y544

EPDs								
BW	WW	YW	Milk	MV	YSC	REA	MARB	CHB
2.2	42	72	30	51	0.9	0.26	0.02	102
PERFORMANCE			PIGMENT					
BW	Adj. WW	Adj. YW	Left Eye	Right Eye				
74	658	1283	100	0				



W4 G025 NIGHTCAP K777

DOB: 11/20/2022 Bull 44588285 Tattoo: K777 Horned

CHURCHILL NIGHTCAP 7256E
W4 NIGHTCAP G025 44226528
CHURCHILL LADY 7200E
BAR-S-SOF MR 88X 310
W4 310 RIB DOMET G197 44588155
W4 18U DOMINETTE 103A ET

EPDs								
BW	WW	YW	Milk	MV	YSC	REA	MARB	CHB
3	57	96	29	58	0.8	0.56	0.15	124
PERFORMANCE			PIGMENT					
BW	Adj. WW	Adj. YW	Left Eye	Right Eye				
73	681	1315	75	100				



W4 108E SENSATION K783

DOB: 12/26/2022 Bull 44581838 Tattoo: K783 Polled

UPS SENSATION 2296 ET
W4 2296 SENSATION 108E P43852998
TOWNER PHYLLIS 20B ET
F 157K RIBSTONE 763
B MISS RIBSTONE 540C 43722932
B MISTY ROBIN 243Z

EPDs								
BW	WW	YW	Milk	MV	YSC	REA	MARB	CHB
3.0	57	96	28	57	1.0	0.53	0.18	128
PERFORMANCE			PIGMENT					
BW	Adj. WW	Adj. YW	Left Eye	Right Eye				
70	695	1315	0	0				



W4 E030 MR BEEF K789

DOB: 12/25/2022 Bull 44581296 Tattoo: K789 Horned

DH DOMINO 392A
W4 392A MR BEEF E030 43852398
W4 0387 DOMET B183
BAR-S-SOF MR 88X 310
W4 310 MISS RIBEYE D146 43874000
CHURCHILL LADY 767T

EPDs								
BW	WW	YW	Milk	MV	YSC	REA	MARB	CHB
3.4	51	86	33	58	0.9	0.39	0.08	112
PERFORMANCE			PIGMENT					
BW	Adj. WW	Adj. YW	Left Eye	Right Eye				
74	763	1311	90	100				



81 | W4 E030 MR BEEF K789



W4 G025 NIGHTCAP K790

DOB: 12/20/2022 Bull 44586933 Tattoo: K790 Horned

CHURCHILL NIGHTCAP 7256E
W4 NIGHTCAP G025 44226528
CHURCHILL LADY 7200E
CL 1 DOMINO 860U
JA L1 DOMINETTE 2744Z 43298877
JA L1 DOMINETTE 8102U

EPDs								
BW	WW	YW	Milk	MV	YSC	REA	MARB	CHB
4.4	65	113	27	59	0.9	0.47	0.09	120
PERFORMANCE			PIGMENT					
BW	Adj. WW	Adj. YW	Left Eye	Right Eye				
65	753	1325	50	100				



W4 G025 NIGHTCAP K791

DOB: 12/20/2022 Bull 44579133 Tattoo: K791 Horned

CHURCHILL NIGHTCAP 7256E
W4 NIGHTCAP G025 44226528
CHURCHILL LADY 7200E
CHURCHILL RANCHER 592R
W4 592 DOMET Y557 43314076
B LADY OXLEY 662

EPDs								
BW	WW	YW	Milk	MV	YSC	REA	MARB	CHB
3.8	64	106	28	59	0.9	0.4	0.18	123
PERFORMANCE			PIGMENT					
BW	Adj. WW	Adj. YW	Left Eye	Right Eye				
66	735	1350	20	45				



W42C BEEFRIB K002

DOB: 9/14/2022 Bull 44418849 Tattoo: K002 Horned

HH ADVANCE 8203U ET
W4 392A MR BEEF D557 43924628
W4 955 MAGGIE 134Y ET
BAR-S-SOF MR 88X 310
W4 310 MS RIBEYE E002 43928296
W4 18U DOMINETTE 106A ET

EPDs								
BW	WW	YW	Milk	MV	YSC	REA	MARB	CHB
5.2	55	96	24	51	1.4	0.6	0.06	126
PERFORMANCE			PIGMENT					
BW	Adj. WW	Adj. YW	Left Eye	Right Eye				
77	700	1321	95	0				



84 | W42C BEEFRIB K002

2024 Spring Sale Scenes





THANK YOU

for being part of our spring event!





WR2C DOMBEEF K043

DOB: 9/28/2022 Bull 44418850 Tattoo: K043 Horned

HH ADVANCE 8203U ET
W4 392A MR BEEF D557 43924628
W4 955 MAGGIE 134Y ET
W4 955 DOMINO 136Y 2ET
W4 136Y DOMET E043 43928309
H LADY WILDFIRE 6123

EPDs								
BW	WW	YW	Milk	MV	YSC	REA	MARB	CHB
4.1	50	88	20	46	1.4	0.41	0.03	122
PERFORMANCE			PIGMENT					
BW	Adj. WW	Adj. YW	Left Eye	Right Eye				
79	645	1304	60	100				



85 | WR2C DOMBEEF K043



W4 SPRING CREEK K08

DOB: 10/20/2022 Bull 44472240 Tattoo: K08 Horned

DH DOMINO 109Y
W4 109Y DOMINO D718 43931167
DH MS ADVANCE 3192
B FOREMOST 24C
W4 24C DOMET E077 43928323
B PI LADY 506C

EPDs								
BW	WW	YW	Milk	MV	YSC	REA	MARB	CHB
3.8	55	89	29	56	1.1	0.33	0.09	102
PERFORMANCE			PIGMENT					
BW	Adj. WW	Adj. YW	Left Eye	Right Eye				
70	653	1290	100	100				



86 | W4 SPRING CREEK K08



W4 MV 100H DOMINO K425

DOB: 11/1/2022 Bull 44412761 Tattoo: K425 Horned

CL 1 DOMINO 7195E
W4 7195 DOMINO 100H ET 44186649
CHURCHILL LADY 5131C ET
CHURCHILL DOMINO 166Y
W4 166Y DOMET D673 44058808
W4 RENO DOMET 9519 ET 2

EPDs								
BW	WW	YW	Milk	MV	YSC	REA	MARB	CHB
4.4	58	93	28	57	1.2	0.4	0.19	131
PERFORMANCE			PIGMENT					
BW	Adj. WW	Adj. YW	Left Eye	Right Eye				
64	727	1415	100	100				



W4 RV DOMINO K802

DOB: 10/14/2022 Bull 44481198 Tattoo: K802 Horned

CL 1 DOMINO 8117F 1ET
CHURCHILL DOMINO 0172H P44164067
CHURCHILL LADY 7189E ET
CL 1 DOMINO 8117F 1ET
W4 8117 LADY H002 44328274
CHURCHILL LADY 859F

EPDs								
BW	WW	YW	Milk	MV	YSC	REA	MARB	CHB
1.4	61	93	39	70	1.5	0.48	0.43	150
PERFORMANCE			PIGMENT					
BW	Adj. WW	Adj. YW	Left Eye	Right Eye				
68	741	1247	100	100				

"We've been selecting W4 Hereford bulls for more than 6 years and use them on Brahman type females. We continue to use them because they have good feet and legs, can travel and they don't melt when we turn them out. They work in the heat here in deep East Texas and do well for us. We retain ownership of our steer calves and we've been happy with the results of our W4 sired calves. We sell our females in select replacement sales like at Houston Livestock Show and those managed by Johnson Cattle Marketing. We also sell the heifers at private treaty and have a number of 4-H and FFA youth who purchase the Tiger Stripe F1s for their pen show competitions. They work is the bottom line."

Skipper and Tyler Williams
DeBerry, Texas

Skipper Williams





W4 RV ADVANCE K803

DOB: 10/12/2022 Bull 44481194 Tattoo: K803 Horned

HH ADVANCE 0081X ET
FS ADVANCE 620D 43681936
HH MISS ADVANCE 0299X ET
HH ADVANCE 3006A
FS MISS ADVANCE 9020G 44066149
FS MISS ADVANCE 604D

EPDs								
BW	WW	YW	Milk	MV	YSC	REA	MARB	CHB
3.1	56	89	33	61	1.4	0.28	0.02	104
PERFORMANCE			PIGMENT					
BW	Adj. WW	Adj. YW	Left Eye	Right Eye				
66	724	1254	0	40				



W4 RV DOMINO K802

DOB: 10/14/2022 Bull 44481198 Tattoo: K802 Horned

CL 1 DOMINO 8117F 1ET
CHURCHILL DOMINO 0172H P44164067
CHURCHILL LADY 7189E ET
CL 1 DOMINO 8117F 1ET
W4 8117 LADY H002 44328274
CHURCHILL LADY 859F

EPDs								
BW	WW	YW	Milk	MV	YSC	REA	MARB	CHB
1.4	61	93	39	70	1.5	0.48	0.43	150
PERFORMANCE			PIGMENT					
BW	Adj. WW	Adj. YW	Left Eye	Right Eye				
60	741	1247	100	100				



W4 E030 MR BEEF K728

DOB: 10/31/2022 Bull 44586929 Tattoo: K728 Scurred

DH DOMINO 392A
W4 392A MR BEEF E030 43852398
W4 0387 DOMET B183
B FOREMOST 24C
W4 24C MS BERRY E121 43986837
B 52X DOMINETTE 5003C

EPDs								
BW	WW	YW	Milk	MV	YSC	REA	MARB	CHB
2.8	48	79	31	55	1	0.33	0.08	105
PERFORMANCE			PIGMENT					
BW	Adj. WW	Adj. YW	Left Eye	Right Eye				
65	704	1242	100	100				



W4 F613 DIABLO ROGER K641

DOB: 9/26/2022 Bull 44579147 Tattoo: K641 Horned

SR DIABLO 613A
W4 DIABLO ROGER F613 44113970
F 032X DOMINETTE 458
W4 592 DOMINO 102Y ET
W4 102 DOMET B518 43596470
H LADY DOMINO 535E

EPDs								
BW	WW	YW	Milk	MV	YSC	REA	MARB	CHB
3.4	51	81	28	54	1.2	0.48	0.12	120
PERFORMANCE			PIGMENT					
BW	Adj. WW	Adj. YW	Left Eye	Right Eye				
68	568	820	100	100				



Lots 93-146

Registered Hereford Females Bred To Registered Hereford Bulls



W4 F633 DOMINETTE K502

DOB: 09/05/2022 Cow 44587051 Tattoo: K502

DH DOMINO 392A
W4 392A MR BEEF F633 44147922
 DHR LADY SENSATION GO BOB 493
 B 72X DOMINO 50Z
B DOMINETTE 573C 43724394
 B ROXANNE 801

BW	WW	YW	Milk	MV	YSC	REA	MARB	CHB
2.2	53	83	25	52	16.4	0.36	0.08	108

Pasture exposed to FS Advance 2074K #44525944 5/7/24 to 7/23/24.



W4 106D HOMETOWN DOMET K531

DOB: 09/12/2022 Cow 44587058 Tattoo: K531

C 10Y HOMETOWN 4108
W4 4108 HOMETOWN 106D ET 43742956
 HH MISS ADVANCE 9168W
 B CHURCHILL 6033
W4 6033 DOMET C140 43765314
 W4 146 DOMINET 9510 ET 8

BW	WW	YW	Milk	MV	YSC	REA	MARB	CHB
3.4	46	75	23	46	12.6	0.36	0.1	110

Pasture exposed to FS Advance 2074K #44525944 5/7/24 to 7/23/24.



W4 103F DOMINETTE K562

DOB: 09/19/2022 Cow 44587074 Tattoo: K562

C BAILEES MILES 4312 ET
W4 4312 DESPERADO 103F ET 43962996
 W4 2002 LADY C008
 CL 1 DOMINO 072X
B MISS 72X DOMINETTE 459B 43497824
 B MISTY ROBIN 102Y

BW	WW	YW	Milk	MV	YSC	REA	MARB	CHB
2	44	68	29	50	8.9	0.3	0.19	123

Pasture exposed to FS Advance 2074K #44525944 5/7/24 to 7/23/24.



W4 F613 DOMINETTE K593

DOB: 09/25/2022 Cow 44587067 Tattoo: K593

SR DIABLO 613A
W4 DIABLO ROGER F613 44113970
 F 032X DOMINETTE 458
 CL 1 DOMINO 072X
B 72X DOMINETTE 446B 43620895
 B SILVIAS MISS 104Y

BW	WW	YW	Milk	MV	YSC	REA	MARB	CHB
3.4	53	79	31	57	13.9	0.52	0.1	120

Pasture exposed to FS Advance 2074K #44525944 5/7/24 to 7/23/24.



W4 7177 DOMET K607

DOB: 09/21/2022 Cow 44587181 Tattoo: K607

CL1 DOMINO 5191C 1ET
CL 1 DOMINO 7177E 43800276
CL1 DOMINETTE 5201C 1ET
CL 1 DOMINO 193Y 1ET
W4 193Y DOMET E022 43986857
W4 4011 DOMET Z048

BW	WW	YW	Milk	MV	YSC	REA	MARB	CHB
1.2	51	80	28	54	10.5	0.28	0.14	111

Pasture exposed to FS Advance 2074K #44525944 5/7/24 to 7/23/24.



W4 7177 DOMET K618

DOB: 09/28/2022 Cow 44587095 Tattoo: K618

CL1 DOMINO 5191C 1ET
CL 1 DOMINO 7177E 43800276
CL1 DOMINETTE 5201C 1ET
W4 955 DOMINO 136Y 2ET
W4 136Y DOMINO D711 43945683
W4 R019 DOMET U120

BW	WW	YW	Milk	MV	YSC	REA	MARB	CHB
2.4	59	91	27	56	9.1	0.4	0.14	118

Pasture exposed to FS Advance 2074K #44525944 5/7/24 to 7/23/24.



W4 392A DOMET ADVANCE K623

DOB: 09/27/2022 Cow 44587296 Tattoo: K623

CL 1 DOMINO 0141 1ET
DH DOMINO 392A 43459361
DH MISS ADVANCE 9156
CL 1 DOMINO 333A
HH MISS ADVANCE 7282E 43786358
HH MISS ADVANCE 3116A ET

BW	WW	YW	Milk	MV	YSC	REA	MARB	CHB
2.3	63	102	30	62	13.3	0.59	-0.07	109

Pasture exposed to FS Advance 2074K #44525944 5/7/24 to 7/23/24.



W4 0021 DOMET K638

DOB: 10/02/2022 Cow 44587065 Tattoo: K638

NJW LONG HAUL 36E ET
RCR LONG COFFEE 20021 P44119843
RCR MS COFFEE 3027 17723 ET
CL 1 DOMINO 7195E
W4 7195 DOMET H083 44328286
HH MISS ADVANCE 7282E

BW	WW	YW	Milk	MV	YSC	REA	MARB	CHB
2.1	66	104	33	66	20.9	0.51	0.11	132

Pasture exposed to FS Advance 2074K #44525944 5/7/24 to 7/23/24.



W4 1600 JAMBA SENSATION K645

DOB: 10/03/2022 Cow 44587053 Tattoo: K645

CHURCHILL SENSATION 028X
KGB TFR KR SENSATION 028X 1600 43772981
H LAYLA 3521
SR CCC JAMBALAYA 1404B ET
SR LADY JAMBA 1865 43988218
CHURCHILL LADY 5127C ET

BW	WW	YW	Milk	MV	YSC	REA	MARB	CHB
2.5	59	90	36	65	20.3	0.53	0.12	116

Pasture exposed to FS Advance 2074K #44525944 5/7/24 to 7/23/24.



W4 1600 DOMET K646

DOB: 10/03/2022 Cow 44587281 Tattoo: K646

CHURCHILL SENSATION 028X
KGB TFR KR SENSATION 028X 1600 43772981
H LAYLA 3521
DH DOMINO 392A
W4 392A DOMET F654 44174214
W 6213 DOMET Y516

BW	WW	YW	Milk	MV	YSC	REA	MARB	CHB
2.0	58	88	36	65	1.1	0.54	0.54	115

Pasture exposed to FS Advance 2074K #44525944 5/7/24 to 7/23/24.



W4 1600 EVE K648

DOB: 10/03/2022 Cow 44587166 Tattoo: K648

CHURCHILL SENSATION 028X
KGB TFR KR SENSATION 028X 1600 43772981
H LAYLA 3521
W4 W168 DOMINO B080
W4 B080 EVE E610 44059739
H EVE 623 ET

BW	WW	YW	Milk	MV	YSC	REA	MARB	CHB
2.8	54	88	35	62	20.3	0.43	0.09	111

Pasture exposed to FS Advance 2074K #44525944 5/7/24 to 7/23/24.



W4 7177 DOMET K650

DOB: 10/05/2022 Cow 44587063 Tattoo: K650

CL1 DOMINO 5191C 1ET
CL 1 DOMINO 7177E 43800276
CL1 DOMINETTE 5201C 1ET
CL 1 DOMINO 193Y 1ET
W4 193Y MS DOMINO E068 43983495
W4 592 DOMET Z003

BW	WW	YW	Milk	MV	YSC	REA	MARB	CHB
2.3	57	89	29	58	10.2	0.32	0.14	111

Pasture exposed to FS Advance 2074K #44525944 5/7/24 to 7/23/24.



W4 1600 DOMET K668

DOB: 10/08/2022 Cow 44587278 Tattoo: K668

CHURCHILL SENSATION 028X
KGB TFR KR SENSATION 028X 1600 43772981
H LAYLA 3521
DH DOMINO 392A
W4 392A DOMET G691 44227366
W4 6213 DOMET Y084

BW	WW	YW	Milk	MV	YSC	REA	MARB	CHB
2.2	60	93	36	66	20	0.5	0.1	113

Pasture exposed to FS Advance 2074K #44525944 5/7/24 to 7/23/24.



W4 392A DOMET K669

DOB: 10/11/2022 Cow 44587304 Tattoo: K669

CL 1 DOMINO 0141 1ET
DH DOMINO 392A 43459361
DH MISS ADVANCE 9156
FS ADVANCE 1123Y
W4 1123 DOMET B026 43605043
W4 522 DOMET Y719

BW	WW	YW	Milk	MV	YSC	REA	MARB	CHB
3.5	62	101	29	60	12.9	0.48	-0.01	110

Pasture exposed to FS Advance 2074K #44525944 5/7/24 to 7/23/24.



W4 107G DOMET K688

DOB: 10/12/2022 Cow 44587273 Tattoo: K688

CL 1 DOMINO 7195E
W4 7195 ADVANCE DOM 107G ET 44189991
H CCC MS 1068Y ADVANCE 4431 ET
BAR-S-SOF MR 88X 310
C/C 310 MAGALICIOUS C516 43680275
W4 955 MAGGIE 134Y ET

BW	WW	YW	Milk	MV	YSC	REA	MARB	CHB
2.6	53	87	30	56	11.2	0.52	0.09	125

Pasture exposed to FS Advance 2074K #44525944 5/7/24 to 7/23/24.



W4 F613 DOMET K745

DOB: 11/10/2022 Cow 44587092 Tattoo: K745

SR DIABLO 613A
W4 DIABLO ROGER F613 44113970
F 032X DOMINETTE 458
CHURCHILL DOMINO 166Y
W4 166Y DOMET E607 44059870
W4 1120 ADVANCE DOM B029

BW	WW	YW	Milk	MV	YSC	REA	MARB	CHB
3.9	54	85	29	56	12.5	0.5	0.12	120

Pasture exposed to FS Advance 2074K #44525944 5/7/24 to 7/23/24.



W4 0172 DOMET K748

DOB: 11/11/2022 Cow 44587112 Tattoo: K748

CL 1 DOMINO 8117F 1ET
CHURCHILL DOMINO 0172H P44164067
CHURCHILL LADY 7189E ET
CL 1 DOMINO 7195E
W4 7195 DOMET H016 44328273
HH MISS ADVANCE 7259E

BW	WW	YW	Milk	MV	YSC	REA	MARB	CHB
1.6	61	90	29	60	14.6	0.47	0.25	134

Pasture exposed to FS Advance 2074K #44525944 5/7/24 to 7/23/24.



W4 F684 DOMET K500

DOB: 09/01/2022 Cow 44587289 Tattoo: K500

DH DOMINO 392A
W4 392A MR BEEF F684 44172296
W4 955 MAGGIE 134Y ET
HH ADVANCE 5044C ET
CHURCHILL LADY 7200E 43802007
CHURCHILL LADY 2227Z ET

BW	WW	YW	Milk	MV	YSC	REA	MARB	CHB
1.6	55	95	33	61	15.4	0.37	0.07	115

Pasture exposed to FS Advance 1010J #44307017 5/7/24 to 7/23/24.



W4 107G LADY ADVANCE K520

DOB: 09/09/2022 Cow 44587144 Tattoo: K520

CL 1 DOMINO 7195E
W4 7195 ADVANCE DOM 107G ET 44189991
H CCC MS 1068Y ADVANCE 4431 ET
RCR L1 AURUM DOMINO 08120
B LADY AURUM 491B 43589959
B AMERICAN HONEY 12X

BW	WW	YW	Milk	MV	YSC	REA	MARB	CHB
1.9	46	75	23	46	14.9	0.29	0.11	114

Pasture exposed to FS Advance 1010J #44307017 5/7/24 to 7/23/24.





W4 106D DOMET K523

DOB: 09/09/2022 Cow 44587070 Tattoo: K523

C 10Y HOMETOWN 4108
W4 4108 HOMETOWN 106D ET 43742956
HH MISS ADVANCE 9168W
DB 5216 DOM 0387
W4 0387 DOMET C301 43765276
W4 522 DOMET Z161

BW	WW	YW	Milk	MV	YSC	REA	MARB	CHB
3.7	47	81	27	51	16.7	0.32	0.14	110

Pasture exposed to FS Advance 1010J #44307017 5/7/24 to 7/23/24.



W4 G025 LADY K539

DOB: 09/06/2022 Cow 44587286 Tattoo: K539

CHURCHILL NIGHTCAP 7256E
W4 NIGHTCAP G025 44226528
CHURCHILL LADY 7200E
HH ADVANCE 5044C ET
W4 5044 LADY G062 44282566
CHURCHILL LADY 2139Z ET

BW	WW	YW	Milk	MV	YSC	REA	MARB	CHB
2.1	58	97	30	59	13.9	0.38	0.14	117

Pasture exposed to FS Advance 1010J #44307017 5/7/24 to 7/23/24.



W4 392A DOMET K571

DOB: 09/20/2022 Cow 44587121 Tattoo: K571

CL 1 DOMINO 0141 1ET
DH DOMINO 392A 43459361
DH MISS ADVANCE 9156
W4 S109 ADVANCE 502Y ET
W4 502Y DOMET D020 43930657
W4 8203 DOMET Y610

BW	WW	YW	Milk	MV	YSC	REA	MARB	CHB
3.5	57	95	26	54	14.4	0.41	-0.02	109

Pasture exposed to FS Advance 1010J #44307017 5/7/24 to 7/23/24.



W4 F684 DOMET K599

DOB: 09/21/2022 Cow 44587263 Tattoo: K599

DH DOMINO 392A
W4 392A MR BEEF F684 44172296
W4 955 MAGGIE 134Y ET
GH ADAMS NORTHERN YANK ET 230U
B MISTY ROBIN 268Z 43291803
B KATE 832

BW	WW	YW	Milk	MV	YSC	REA	MARB	CHB
3.3	55	97	30	57	11.1	0.4	0.13	123

Pasture exposed to FS Advance 1010J #44307017 5/7/24 to 7/23/24.



W4 392A DOMET LADY K639

DOB: 10/05/2022 Cow 44587330 Tattoo: K639

CL 1 DOMINO 0141 1ET
DH DOMINO 392A 43459361
DH MISS ADVANCE 9156
CL 1 DOMINO 955W
W4 955W LADY C009 43635709
CHURCHILL LADY 2100Z

BW	WW	YW	Milk	MV	YSC	REA	MARB	CHB
3.3	64	105	31	63	12.3	0.57	0.01	117

Pasture exposed to FS Advance 1010J #44307017 5/7/24 to 7/23/24.



W4 F613 LADY K640

DOB: 10/02/2022 Cow 44587329 Tattoo: K640

SR DIABLO 613A
W4 DIABLO ROGER F613 44113970
F 032X DOMINETTE 458
SR SUSTAIN 754B
CHURCHILL LADY 9253G 44053275
CHURCHILL LADY 4343B

BW	WW	YW	Milk	MV	YSC	REA	MARB	CHB
3.1	58	92	35	64	19	0.65	0.08	122

Pasture exposed to FS Advance 1010J #44307017 5/7/24 to 7/23/24.



W4 G025 MS ADVANCE K660

DOB: 10/03/2022 Cow 44587164 Tattoo: K660

CHURCHILL NIGHTCAP 7256E
W4 NIGHTCAP G025 44226528
CHURCHILL LADY 7200E
IMR 3128A ADVANCE 5008C
IMR 5008C MISS ADVANCE 9170G 44084727
IMR L1 177R DOMINETTE 5028C ET

BW	WW	YW	Milk	MV	YSC	REA	MARB	CHB
2.7	60	100	29	59	9.2	0.42	0.14	117

Pasture exposed to FS Advance 1010J #44307017 5/7/24 to 7/23/24.



W4 064 BAILEE BELLE K702

DOB: 10/14/2022 Cow 44587103 Tattoo: K702

C CJC BELLE HEIR ET
CHURCHILL BELLE HEIR 064H 44149873
CHURCHILL LADY 897F ET
C BAILEES MILES 4312 ET
W4 4312 BAILEE F521 44174288
B MISS SENSATIONAL 405B

BW	WW	YW	Milk	MV	YSC	REA	MARB	CHB
2.7	55	88	30	58	20.8	0.63	0.15	129

Pasture exposed to FS Advance 1010J #44307017 5/7/24 to 7/23/24.



W4 7177 DOMET K731

DOB: 10/31/2022 Cow 44587109 Tattoo: K731

CL 1 DOMINO 5191C 1ET
CL 1 DOMINO 7177E 43800276
CL 1 DOMINETTE 5201C 1ET
W4 S109 ADVANCE 502Y ET
W4 502Y ADVANCE D550 43833973
W4 S105 DOMET Y538

BW	WW	YW	Milk	MV	YSC	REA	MARB	CHB
2.5	53	85	24	51	10.1	0.33	0.12	112

Pasture exposed to FS Advance 1010J #44307017 5/7/24 to 7/23/24.



W4 392A DOMET K744

DOB: 11/05/2022 Cow 44591756 Tattoo: K744

CL 1 DOMINO 0141 1ET
DH DOMINO 392A 43459361
DH MISS ADVANCE 9156
CL 1 DOMINO 338A
W4 338 DOMET E551 44059897
DH L1 DOMINETTE 450

BW	WW	YW	Milk	MV	YSC	REA	MARB	CHB
2.6	57	92	32	60	16.4	0.47	-0.04	109

Pasture exposed to FS Advance 1010J #44307017 5/7/24 to 7/23/24.



W4 392A DOMET ADV K762

DOB: 11/25/2022 Cow 44587139 Tattoo: K762

CL 1 DOMINO 0141 1ET
DH DOMINO 392A 43459361
DH MISS ADVANCE 9156
CL 1 DOMINO 333A
HH MISS ADVANCE 7219E 43786298
HH MISS ADVANCE 1023Y ET

BW	WW	YW	Milk	MV	YSC	REA	MARB	CHB
3.2	63	99	33	65	10.8	0.48	0.02	106

Pasture exposed to FS Advance 1010J #44307017 5/7/24 to 7/23/24.



W4 MV 100H BAILEES K426

DOB: 12/02/2022 Cow 44412763 Tattoo: K426

CL 1 DOMINO 7195E
W4 7195 DOMINO 100H ET 44186649
CHURCHILL LADY 5131C ET
C BAILEES MILES 4312 ET
W4 4312 BAILEES E761 43989060
B MISTY ROBIN 381A

BW	WW	YW	Milk	MV	YSC	REA	MARB	CHB
4.4	61	102	30	60	15.7	0.43	0.22	134

Pasture exposed to FS Advance 1010J #44307017 5/7/24 to 7/23/24.



W4 SPRING CREEK K04

DOB: 10/03/2022 Cow 44472237 Tattoo: 7570647

DH DOMINO 109Y
W4 109Y DOMINO D718 43931167
DH MS ADVANCE 3192
W4 S109 ADVANCE 502Y ET
W4 502Y DOMET E028 43928303
W4 188 DOMET R008

BW	WW	YW	Milk	MV	YSC	REA	MARB	CHB
5.4	55	91	26	53	9.5	0.4	-0.05	105

Pasture exposed to FS Advance 1010J #44307017 5/7/24 to 7/23/24.



W4 6193 DOMINETTE K015

DOB: 03/15/2022 Cow 44543237 Tattoo: K015

HH ADVANCE 4082B ET
JA L1 DOMINO 6212D 43678407
JA L1 DOMINETTE 301A
JA L1 DOMINO 302A
JA L1 DOMINETTE 804F 43917587
JA L1 DOMINETTE 4505B

BW	WW	YW	Milk	MV	YSC	REA	MARB	CHB
3.2	55	93	34	62	17.7	0.17	-0.03	101

Pasture exposed to HH Advance 2014K #44346678 5/7/24 to 7/23/24.



W4 9295 DOMINETTE K032

DOB: 02/10/2022 Cow 44520906 Tattoo: K032

HH ADVANCE 5107C ET
HH ADVANCE 9295G 44089733
HH MISS ADVANCE 6325D
CL 1 DOMINO 8138F 1ET
CL 1 DOMINETTE 0145H 44138976
CL1 DOMINETTE 5171C 1ET

BW	WW	YW	Milk	MV	YSC	REA	MARB	CHB
3	61	97	32	62	16.2	0.33	0.3	144

Pasture exposed to HH Advance 2014K #44346678 5/7/24 to 7/23/24.



W4 392A DOMINETTE K036

DOB: 03/15/2022 Cow 44543257 Tattoo: K036

CL 1 DOMINO 0141 1ET
DH DOMINO 392A 43459361
DH MISS ADVANCE 9156
GB L1 DOMINO 177R
CL1 DOMINETTE 495B 43465905
CL 1 DOMINETE 1133Y 1ET

BW	WW	YW	Milk	MV	YSC	REA	MARB	CHB
1.8	63	100	30	62	15.8	0.59	-0.02	112

Pasture exposed to HH Advance 2014K #44346678 5/7/24 to 7/23/24.



W4 1600 DOMET SENSATION K113

DOB: 04/05/2022 Cow 44543256 Tattoo: K113

CHURCHILL SENSATION 028X
KGB TFR KR SENSATION 028X 1600 43772981
H LAYLA 3521
CHURCHILL RANCHER 592R
W4 592 DOMET Z002 43415633
GKB W4 212M MISS DOMINO B621

BW	WW	YW	Milk	MV	YSC	REA	MARB	CHB
1.9	54	84	31	58	15.8	0.36	0.16	112

Pasture exposed to HH Advance 2014K #44346678 5/7/24 to 7/23/24.



W4 7177 DOMET K119

DOB: 03/12/2022 Cow 44492701 Tattoo: K119

CL1 DOMINO 5191C 1ET
CL 1 DOMINO 7177E 43800276
CL1 DOMINETTE 5201C 1ET
W4 607 STARFIRE U010
W4 U010 DOMET Z075 43413967
L STAR MS MOM'S PRIDE 3382S156

BW	WW	YW	Milk	MV	YSC	REA	MARB	CHB
2.4	53	83	26	52	12	0.36	0.14	113

Pasture exposed to HH Advance 2014K #44346678 5/7/24 to 7/23/24.



W4 B080 DOMET K134

DOB: 03/16/2022 Cow 44492734 Tattoo: K134

W4 -S ADVANCE DOM W168 ET
W4 W168 DOMINO B080 43520661
W4 4011 DOMET T127
CL 1 DOMINO 465P
MISS DOMINO M204 43338038
MISS DOMINO M814

BW	WW	YW	Milk	MV	YSC	REA	MARB	CHB
4.2	48	77	27	51	9.2	0.34	-0.04	96

Pasture exposed to HH Advance 2014K #44346678 5/7/24 to 7/23/24.



W4 4312 BAILEE K135

DOB: 03/17/2022 Cow 44492735 Tattoo: K135

C MILES MCKEE 2103 ET
C BAILEES MILES 4312 ET 43487323
BR BAILEE 1066 ET
DH DOMINO 392A
W4 392A POLLY DOMET E746 44059752
B MISS POLLY 454B

BW	WW	YW	Milk	MV	YSC	REA	MARB	CHB
4.4	59	99	29	58	13.3	0.51	0.07	116

Pasture exposed to HH Advance 2014K #44346678 5/7/24 to 7/23/24.



W4 B080 DOMINETTE K137

DOB: 03/15/2022 Cow 44520955 Tattoo: K137

W4 -S ADVANCE DOM W168 ET
W4 W168 DOMINO B080 43520661
W4 4011 DOMET T127
DH DOMINO 302
DH DOMINETTE 0117 43355726
DH DOMINETTE 1046

BW	WW	YW	Milk	MV	YSC	REA	MARB	CHB
6	51	87	26	52	14.3	0.29	-0.11	85

Pasture exposed to HH Advance 2014K #44346678 5/7/24 to 7/23/24.



W4 108E LADY K142

DOB: 04/25/2022 Cow 44543354 Tattoo: K142

UPS SENSATION 2296 ET
W4 2296 SENSATION 108E P43852998
TOWNER PHYLLIS 20B ET
W4 613 DOMINO W219
W4 W219 LADY BANKER D621 43872850
W4 T154 DOMET B056

BW	WW	YW	Milk	MV	YSC	REA	MARB	CHB
3.4	54	92	31	58	12.8	0.68	0.11	131

Pasture exposed to HH Advance 2014K #44346678 5/7/24 to 7/23/24.



W4 108E DOMET K143

DOB: 03/25/2022 Cow 44492704 Tattoo: K143

UPS SENSATION 2296 ET
W4 2296 SENSATION 108E P43852998
TOWNER PHYLLIS 20B ET
W4 955 DOMINO 136Y 2ET
W4 136Y DOMET D083 43931807
W4 T15 DOMET X168

BW	WW	YW	Milk	MV	YSC	REA	MARB	CHB
3	53	82	31	58	13.2	0.59	0.07	124

Pasture exposed to HH Advance 2014K #44346678 5/7/24 to 7/23/24.



W4 101G DOMET K181

DOB: 04/22/2022 Cow 44536678 Tattoo: K181

CL 1 DOMINO 7195E
W4 7195 ADVANCE DOM 101G ET 44104035
H CCC MS 1068Y ADVANCE 4431 ET
DH DOMINO 737
DH DOMINETTE 0187 43221976
DH DOMINETTE 4151

BW	WW	YW	Milk	MV	YSC	REA	MARB	CHB
2	50	80	27	52	16.2	0.31	0.07	113

Pasture exposed to HH Advance 2014K #44346678 5/7/24 to 7/23/24.



W4 392A LADY DOMET K524

DOB: 09/10/2022 Cow 44543910 Tattoo: K524

CL 1 DOMINO 0141 1ET
DH DOMINO 392A 43459361
DH MISS ADVANCE 9156
CHURCHILL SENSATION 028X
CHURCHILL LADY 832F 43919918
CHURCHILL LADY 614D

BW	WW	YW	Milk	MV	YSC	REA	MARB	CHB
0.6	59	93	37	66	18.1	0.52	0.02	110

Pasture exposed to HH Advance 2014K #44346678 5/7/24 to 7/23/24.



W4 5815 FLINT DOMET K548

DOB: 09/15/2022 Cow 44591755 Tattoo: K548

BAR S LHF 028 240
JCS 240 FLINTLOCK 5815 43606248
LJR MSU WHITNEY 182Z
DH DOMINO 392A
W4 392A DOMET H162 44328279
B MISTY ROBIN 354A

BW	WW	YW	Milk	MV	YSC	REA	MARB	CHB
3.3	60	99	37	67	16.9	0.28	0.14	113

Pasture exposed to HH Advance 2014K #44346678 5/7/24 to 7/23/24.



W4 0172 DOMET K555

DOB: 09/18/2022 Cow 44543363 Tattoo: K555

CL 1 DOMINO 8117F 1ET
CHURCHILL DOMINO 0172H P44164067
CHURCHILL LADY 7189E ET
DB 5216 DOM 0387
W4 0387 DOMET F502 44114155
W4 205 DOMET U697

BW	WW	YW	Milk	MV	YSC	REA	MARB	CHB
2.8	54	89	30	57	14.2	0.4	0.15	117

Pasture exposed to HH Advance 2014K #44346678 5/7/24 to 7/23/24.



W4 1600 DOMET K564

DOB: 09/18/2022 Cow 44543365 Tattoo: K564

CHURCHILL SENSATION 028X
KGB TFR KR SENSATION 028X 1600 43772981
H LAYLA 3521
CHURCHILL DOMINO 166Y
W4 166Y DOMET E640 44059723
W4 1123 DOMET B021

BW	WW	YW	Milk	MV	YSC	REA	MARB	CHB
3.7	57	88	32	61	19.3	0.34	0.17	115

Pasture exposed to HH Advance 2014K #44346678 5/7/24 to 7/23/24.



W4 9101 LADY BELLE K572

DOB: 09/19/2022 Cow 44543361 Tattoo: K572

BR BELLE AIR 6011
C 4038 BELLE AIR 9101 ET 44019153
C 105Y LADY DOMINO 4038
LJS MARK DOMINO 1321
CHURILL LADY 6235D 43702971
CHURCHILL LADY 3287A

BW	WW	YW	Milk	MV	YSC	REA	MARB	CHB
1.5	58	93	36	65	14.5	0.52	0.38	138

Pasture exposed to HH Advance 2014K #44346678 5/7/24 to 7/23/24.



W4 F684 DOMET K626

DOB: 10/02/2022 Cow 44543377 Tattoo: K626

DH DOMINO 392A
W4 392A MR BEEF F684 44172296
W4 955 MAGGIE 134Y ET
NJW 98S R117 RIBEYE 88X ET
GCC9152MISS RIBEYE ET 43509874
C MISS NITRO 9152

BW	WW	YW	Milk	MV	YSC	REA	MARB	CHB
2.8	56	92	30	58	13.2	0.47	0.05	110

Pasture exposed to HH Advance 2014K #44346678 5/7/24 to 7/23/24.



W4 108E LADY K630

DOB: 09/28/2022 Cow 44543368 Tattoo: K630

UPS SENSATION 2296 ET
W4 2296 SENSATION 108E P43852998
TOWNER PHYLLIS 20B ET
HH ADVANCE 5044C ET
CHURCHILL LADY 7227E 43802027
CHURCHILL LADY 1160Y ET

BW	WW	YW	Milk	MV	YSC	REA	MARB	CHB
2	56	91	32	60	16.8	0.62	0.1	121

Pasture exposed to HH Advance 2014K #44346678 5/7/24 to 7/23/24.



W4 108E DOMET K644

DOB: 10/02/2022 Cow 44543359 Tattoo: K644

UPS SENSATION 2296 ET
W4 2296 SENSATION 108E P43852998
TOWNER PHYLLIS 20B ET
W4 W168 DOMINO B080
W4 B080 DOMET G057 44174130
B MISTY ROBIN 387A

BW	WW	YW	Milk	MV	YSC	REA	MARB	CHB
3	53	93	32	58	13.8	0.53	0.1	117

Pasture exposed to HH Advance 2014K #44346678 5/7/24 to 7/23/24.



W4 MV E030 BANL LADY K413

DOB: 03/25/2022 Cow 44352954 Tattoo: K413

DH DOMINO 392A
W4 392A MR BEEF E030 43852398
W4 0387 DOMET B183
W4 613 DOMINO W219
W4 W219 BANK LADY D535 44058802
W\$ 188 DOMET 5588

BW	WW	YW	Milk	MV	YSC	REA	MARB	CHB
2.9	41	75	29	50	13.5	0.31	0.02	111

Pasture exposed to HH Advance 2014K #44346678 5/7/24 to 7/23/24.



W4 SPRING CREEK K09

DOB: 10/02/2022 Cow 44472236 Tattoo: 7570647

DH DOMINO 109Y
W4 109Y DOMINO D718 43931167
DH MS ADVANCE 3192
CHURCHILL TOP SPEED 548C ET
W4 548C TOP DOMET F073 44059846
W4 S105 DOMET Y538

BW	WW	YW	Milk	MV	YSC	REA	MARB	CHB
4.8	57	92	29	57	9.5	0.52	0	111

Pasture exposed to HH Advance 2014K #44346678 5/7/24 to 7/23/24.



W42C DOMETBEEF K010

DOB: 10/06/2022 Cow 44418852 Tattoo: K010

HH ADVANCE 8203U ET
W4 392A MR BEEF D557 43924628
W4 955 MAGGIE 134Y ET
DH DOMINO 392A
W4 392A DOMET G010 44174123
W4 6033 DOMET C167

BW	WW	YW	Milk	MV	YSC	REA	MARB	CHB
4.4	54	95	24	52	10.2	0.5	0.01	122

Pasture exposed to HH Advance 2014K #44346678 5/7/24 to 7/23/24.



Lots 147-229

Registered Hereford Heifers Bred To Low Birth Weight Angus Bulls



W4 F633 DOMET K504

DOB: 09/01/2022 Cow 44587318 Tattoo: K504

DH DOMINO 392A
W4 392A MR BEEF F633 44147922
 DHR LADY SENSATION GO BOB 493
 CL 1 DOMINO 314A
B PI LADY 503C 43634549
 B MISS AURUM MAGNUM

BW	WW	YW	Milk	MV	YSC	REA	MARB	CHB
1	46	76	27	50	20.8	0.24	0.12	107

Pasture exposed to low birth weight Angus bulls 5/7/24 to 8/2/24.



W4 106D HOMETOWN GAL K509

DOB: 09/01/2022 Cow 44587271 Tattoo: K509

C 10Y HOMETOWN 4108
W4 4108 HOMETOWN 106D ET 43742956
 HH MISS ADVANCE 9168W
 W4 592 DOMINO 102Y ET
W4 102Y RANCHERS GAL C111 43765716
 W4 6213 DOMET Y663

BW	WW	YW	Milk	MV	YSC	REA	MARB	CHB
3.5	48	77	26	50	12.5	0.33	0.18	120

Pasture exposed to low birth weight Angus bulls 5/7/24 to 8/2/24.



W4 F684 DOMET LADY K519

DOB: 09/08/2022 Cow 44587269 Tattoo: K519

DH DOMINO 392A
W4 392A MR BEEF F684 44172296
 W4 955 MAGGIE 134Y ET
 CHURCHILL RANCHER 592R
CHURCHILL LADY 891U 42884771
 CHURCHILL LADY 452P

BW	WW	YW	Milk	MV	YSC	REA	MARB	CHB
2.2	53	89	32	58	10	0.41	0.08	119

Pasture exposed to low birth weight Angus bulls 5/7/24 to 8/2/24.



W4 107G DOMET K528

DOB: 09/11/2022 Cow 44587064 Tattoo: K528

CL 1 DOMINO 7195E
W4 7195 ADVANCE DOM 107G ET 44189991
 H CCC MS 1068Y ADVANCE 4431 ET
 KTP C&M LEGACY 2002
W4 2002 LADY C008 43811440
 CHURCHILL ILR LADY 2115Z

BW	WW	YW	Milk	MV	YSC	REA	MARB	CHB
2.1	50	80	29	54	9.5	0.34	0.1	121

Pasture exposed to low birth weight Angus bulls 5/7/24 to 8/2/24.



W4 F613 FROZEN K529

DOB: 9/21/2022 Cow 44592178 Tattoo: K529

SR DIABLO 613A
W4 DIABLO ROGER F613 44113970
F 032X DOMINETTE 458
CL 1 DOMINO 314A
B FROZEN 516C 43634559
B MISS 22S ON TARGET 364A

BW	WW	YW	Milk	MV	YSC	REA	MARB	CHB
3.8	56	92	29	57	1.7	0.45	0.15	124

Pasture exposed to low birth weight Angus bulls 5/7/24 to 8/2/24.



W4 107G DOMET K533

DOB: 09/13/2022 Cow 44587307 Tattoo: K533

CL 1 DOMINO 7195E
W4 7195 ADVANCE DOM 107G ET 44189991
H CCC MS 1068Y ADVANCE 4431 ET
W4 592 DOMINO 102Y ET
W4 8203 ADVANCE D644 43945932
W4 S105 DOMET W651

BW	WW	YW	Milk	MV	YSC	REA	MARB	CHB
3.2	53	84	24	51	10.1	0.31	0.11	116

Pasture exposed to low birth weight Angus bulls 5/7/24 to 8/2/24.



W4 103F DOMINETTE K540

DOB: 09/24/2022 Cow 44587069 Tattoo: K540

C BAILEES MILES 4312 ET
W4 4312 DESPERADO 103F ET 43962996
W4 2002 LADY C008
B 72X DOMINO 50Z
B DOMINETTE 560C 43724338
B LADY SPECTRA 117Y

BW	WW	YW	Milk	MV	YSC	REA	MARB	CHB
2.5	47	73	26	49	9.4	0.32	0.12	115

Pasture exposed to low birth weight Angus bulls 5/7/24 to 8/2/24.



W4 4312 LADY MILES K551

DOB: 09/16/2022 Cow 44587061 Tattoo: K551

C MILES MCKEE 2103 ET
C BAILEES MILES 4312 ET 43487323
BR BAILEE 1066 ET
CL 1 DOMINO 314A
B PI LADY 537C 43722929
B ROXANNE 851

BW	WW	YW	Milk	MV	YSC	REA	MARB	CHB
3.4	49	85	29	53	15	0.35	0.17	119

Pasture exposed to low birth weight Angus bulls 5/7/24 to 8/2/24.



W4 106D MS ADVANCE K554

DOB: 09/16/2022 Cow 44587310 Tattoo: K554

C 10Y HOMETOWN 4108
W4 4108 HOMETOWN 106D ET 43742956
HH MISS ADVANCE 9168W
W4 592 DOMINO 102Y ET
W4 102Y MS ADVANCE C079 43765297
W4 8203 ADVANCE 501Y ET

BW	WW	YW	Milk	MV	YSC	REA	MARB	CHB
4	50	80	25	50	13.1	0.3	0.2	119

Pasture exposed to low birth weight Angus bulls 5/7/24 to 8/2/24.



W4 F633 DOMET K557

DOB: 09/17/2022 Cow 44587326 Tattoo: K557

DH DOMINO 392A
W4 392A MR BEEF F633 44147922
DHR LADY SENSATION GO BOB 493
CL 1 DOMINO 072X
B 72X DOMINETTE 476B 43620916
B MISTY ROBIN 111Y

BW	WW	YW	Milk	MV	YSC	REA	MARB	CHB
2	50	78	27	52	16.8	0.32	0.14	114

Pasture exposed to low birth weight Angus bulls 5/7/24 to 8/2/24.



W4 F633 DOMET K558

DOB: 09/18/2022 Cow 44587075 Tattoo: K558

DH DOMINO 392A
W4 392A MR BEEF F633 44147922
DHR LADY SENSATION GO BOB 493
H BANKER 613 ET
W4 613 DOMET U520 43014825
W4 DOMET P091

BW	WW	YW	Milk	MV	YSC	REA	MARB	CHB
2.7	53	88	26	53	12.8	0.46	0.11	117

Pasture exposed to low birth weight Angus bulls 5/7/24 to 8/2/24.



W4 E030 DOMET K560

DOB: 09/15/2022 Cow 44587334 Tattoo: K560

DH DOMINO 392A
W4 392A MR BEEF E030 43852398
W4 0387 DOMET B183
RCR L1 AURUM DOMINO 08120
B LADY AURUM 487B 43621044
B MISS NEON MOON 25 ET

BW	WW	YW	Milk	MV	YSC	REA	MARB	CHB
2.8	44	72	28	50	16.9	0.28	0.04	107

Pasture exposed to low birth weight Angus bulls 5/7/24 to 8/2/24.



W4 G025 DOMET K561

DOB: 09/16/2022 Cow 44591852 Tattoo: K561

CHURCHILL NIGHTCAP 7256E
W4 NIGHTCAP G025 44226528
CHURCHILL LADY 7200E
CL 1 DOMINO 7195E
W4 7195 DOMET G076 44588153
W4 1120Y MS ADVANCE D617

BW	WW	YW	Milk	MV	YSC	REA	MARB	CHB
3	62	103	27	57	10.4	0.46	0.22	137

Pasture exposed to low birth weight Angus bulls 5/7/24 to 8/2/24.



W4 106D DOMET HOME K565

DOB: 09/22/2022 Cow 44591853 Tattoo: K565

C 10Y HOMETOWN 4108
W4 4108 HOMETOWN 106D ET 43742956
HH MISS ADVANCE 9168W
CHURCHILL DOMINO 166Y
W4 166Y DOMET C026 43764568
W4 T15 DOMET Z643

BW	WW	YW	Milk	MV	YSC	REA	MARB	CHB
4.2	51	84	28	53	12.7	0.3	0.19	119

Pasture exposed to low birth weight Angus bulls 5/7/24 to 8/2/24.



W4 106D MS HOMETOWN K566

DOB: 09/18/2022 Cow 44587300 Tattoo: K566

C 10Y HOMETOWN 4108
W4 4108 HOMETOWN 106D ET 43742956
HH MISS ADVANCE 9168W
BAR-S-SOF MR 88X 310
W4 310 MS RIBEYE C303 43764562
L STAR MISS ROBINHOOD 408 W028

BW	WW	YW	Milk	MV	YSC	REA	MARB	CHB
3.1	48	79	28	52	13.1	0.34	0.19	120

Pasture exposed to low birth weight Angus bulls 5/7/24 to 8/2/24.



W4 106D LADY HOME K568

DOB: 09/23/2022 Cow 44591855 Tattoo: K568

C 10Y HOMETOWN 4108
W4 4108 HOMETOWN 106D ET 43742956
HH MISS ADVANCE 9168W
B EXCEL 20 ET
B LADY EXCELL 549C 43722940
B BALLERINA 915

BW	WW	YW	Milk	MV	YSC	REA	MARB	CHB
3.7	48	82	27	51	14.9	0.29	0.17	118

Pasture exposed to low birth weight Angus bulls 5/7/24 to 8/2/24.



W4 107G DOMET K569

DOB: 09/21/2022 Cow 44587076 Tattoo: K569

CL 1 DOMINO 7195E
W4 7195 ADVANCE DOM 107G ET 44189991
H CCC MS 1068Y ADVANCE 4431 ET
H BANKER 613 ET
W4 613 DOMET Y518 43314040
B LADY OXLEY 769

BW	WW	YW	Milk	MV	YSC	REA	MARB	CHB
3.3	54	89	25	52	9.3	0.48	0.1	129

Pasture exposed to low birth weight Angus bulls 5/7/24 to 8/2/24.



W4 107G DOMET K577

DOB: 09/22/2022 Cow 44587115 Tattoo: K577

CL 1 DOMINO 7195E
W4 7195 ADVANCE DOM 107G ET 44189991
H CCC MS 1068Y ADVANCE 4431 ET
GH ADAMS NORTHERN YANK ET 230U
B MISTY ROBIN 465B 43504824
B MISS LATE KNIGHT 881

BW	WW	YW	Milk	MV	YSC	REA	MARB	CHB
3.3	50	79	27	52	10.8	0.3	0.16	126

Pasture exposed to low birth weight Angus bulls 5/7/24 to 8/2/24.



W4 1600 DOMINETTE K588

DOB: 09/25/2022 Cow 44587130 Tattoo: K588

CHURCHILL SENSATION 028X
KGB TFR KR SENSATION 028X 1600 43772981
H LAYLA 3521
JA L1 DOMINO 8211U
DH L1 DOMINETTE 462 43485331
DH L1 DOMINETTE 883

BW	WW	YW	Milk	MV	YSC	REA	MARB	CHB
1.6	58	92	31	61	21.9	0.33	0.11	105

Pasture exposed to low birth weight Angus bulls 5/7/24 to 8/2/24.





W4 106D DOMET K589

DOB: 09/20/2022 Cow 44587315 Tattoo: K589

C 10Y HOMETOWN 4108
W4 4108 HOMETOWN 106D ET 43742956
HH MISS ADVANCE 9168W
DOMINO M823
MISS DOMINO M527 43597529
MISS DOMINO M223Z

BW	WW	YW	Milk	MV	YSC	REA	MARB	CHB
3.4	47	77	24	48	13.2	0.3	0.14	112

Pasture exposed to low birth weight Angus bulls 5/7/24 to 8/2/24.



W4 7177 DOMET K600

DOB: 10/15/2022 Cow 44591856 Tattoo: K600

CL1 DOMINO 5191C 1ET
CL 1 DOMINO 7177E 43800276
CL1 DOMINETTE 5201C 1ET
W4 592 DOMINO 102Y ET
W4 102Y MS RANCHER D788 43945221
H LADY DOMINO 676

BW	WW	YW	Milk	MV	YSC	REA	MARB	CHB
3	60	90	25	55	10.5	0.27	0.23	115

Pasture exposed to low birth weight Angus bulls 5/7/24 to 8/2/24.



W4 E030 DOMET K606

DOB: 09/26/2022 Cow 44587072 Tattoo: K606

DH DOMINO 392A
W4 392A MR BEEF E030 43852398
W4 0387 DOMET B183
W4 613 DOMINO W219
W4 W219 DOMET D051 43874005
CHURCHILL LADY 7164T

BW	WW	YW	Milk	MV	YSC	REA	MARB	CHB
2.7	41	74	31	52	12.3	0.29	0.06	114

Pasture exposed to low birth weight Angus bulls 5/7/24 to 8/2/24.



W4 E030 DOMET K609

DOB: 09/25/2022 Cow 44587282 Tattoo: K609

DH DOMINO 392A
W4 392A MR BEEF E030 43852398
W4 0387 DOMET B183
W4 5109 ADVANCE 502Y ET
W4 502Y MS ADVANCE E080 43983535
W4 R019 DOMET T631

BW	WW	YW	Milk	MV	YSC	REA	MARB	CHB
3.6	43	73	29	50	15	0.32	-0.02	105

Pasture exposed to low birth weight Angus bulls 5/7/24 to 8/2/24.



W4 F613 MS MARK K611

DOB: 10/14/2022 Cow 44591857 Tattoo: K611

SR DIABLO 613A
W4 DIABLO ROGER F613 44113970
F 032X DOMINETTE 458
GOLDEN OAK OUTCROSS 18U
W4 MS MARK 100A ET P43429606
GKB 146 MISS MARK B422

BW	WW	YW	Milk	MV	YSC	REA	MARB	CHB
4.2	59	94	27	57	16.7	0.82	0.09	135

Pasture exposed to low birth weight Angus bulls 5/7/24 to 8/2/24.



W4 F633 DOMET K612

DOB: 10/16/2022 Cow 44591859 Tattoo: K612

DH DOMINO 392A
W4 392A MR BEEF F633 44147922
DHR LADY SENSATION GO BOB 493
CL 1 DOMINO 7110T
DH L1 DOMINETTE 426 43485109
DH L1 DOMINETTE 915

BW	WW	YW	Milk	MV	YSC	REA	MARB	CHB
1.7	52	82	24	50	16.6	0.34	0.07	100

Pasture exposed to low birth weight Angus bulls 5/7/24 to 8/2/24.



W4 103F DOMET K613

DOB: 09/21/2022 Cow 44587337 Tattoo: K613

C BAILEES MILES 4312 ET
W4 4312 DESPERADO 103F ET 43962996
W4 2002 LADY C008
HH ADVANCE 9005J
W4 9005 DOMET 510Z 43513603
C MS GAME PLAN 4007 ET

BW	WW	YW	Milk	MV	YSC	REA	MARB	CHB
2.4	43	68	23	44	7.6	0.34	0.07	113

Pasture exposed to low birth weight Angus bulls 5/7/24 to 8/2/24.



W4 E030 DOMET K617

DOB: 10/16/2022 Cow 44591861 Tattoo: K617

DH DOMINO 392A
W4 392A MR BEEF E030 43852398
W4 0387 DOMET B183
FS ADVANCE 3001A ET
W4 3001 MISS ADVANCE D032 43873992
B MISTY ROBIN 483B

BW	WW	YW	Milk	MV	YSC	REA	MARB	CHB
2.8	48	86	32	56	14.8	0.3	0.07	113

Pasture exposed to low birth weight Angus bulls 5/7/24 to 8/2/24.



W4 F633 DOMET K624

DOB: 09/27/2022 Cow 44587107 Tattoo: K624

DH DOMINO 392A
W4 392A MR BEEF F633 44147922
DHR LADY SENSATION GO BOB 493
W4 4011 DOMINO T229
W4 T229 DOMET Z045 43414019
W4 MS ADVANCE DOMET N408

BW	WW	YW	Milk	MV	YSC	REA	MARB	CHB
1.9	50	77	24	49	15	0.32	0.02	98

Pasture exposed to low birth weight Angus bulls 5/7/24 to 8/2/24.



W4 F613 DOMET K628

DOB: 09/25/2022 Cow 44587062 Tattoo: K628

SR DIABLO 613A
W4 DIABLO ROGER F613 44113970
F 032X DOMINETTE 458
C 212 DOMINO 4011 ET
W4 4011 DOMET Y503 43314028
W4 205 DOMET U697

BW	WW	YW	Milk	MV	YSC	REA	MARB	CHB
3.8	56	90	30	58	11	0.62	0.08	124

Pasture exposed to low birth weight Angus bulls 5/7/24 to 8/2/24.



W4 108E LADY K631

DOB: 09/25/2022 Cow 44587336 Tattoo: K631

UPS SENSATION 2296 ET
W4 2296 SENSATION 108E P43852998
TOWNER PHYLLIS 20B ET
HH ADVANCE 5044C ET
CHURCHILL LADY 747E 43802081
CHURCHILL LADY 5157C

BW	WW	YW	Milk	MV	YSC	REA	MARB	CHB
1.6	59	98	34	63	19.7	0.52	0.2	131

Pasture exposed to low birth weight Angus bulls 5/7/24 to 8/2/24.



W4 106D DOMET K633

DOB: 09/29/2022 Cow 44587179 Tattoo: K633

C 10Y HOMETOWN 4108
W4 4108 HOMETOWN 106D ET 43742956
HH MISS ADVANCE 9168W
JA L1 DOMINO 762
MISS DOMINO M824 42951838
MISS DOMINO M253

BW	WW	YW	Milk	MV	YSC	REA	MARB	CHB
3.8	46	76	24	47	14.8	0.25	0.16	110

Pasture exposed to low birth weight Angus bulls 5/7/24 to 8/2/24.



W4 4312 BAILEE K642

DOB: 10/25/2022 Cow 44591862 Tattoo: K642

C MILES MCKEE 2103 ET
C BAILEES MILES 4312 ET 43487323
BR BAILEE 1066 ET
CL 1 DOMINO 072X
B MISS 72X DOMINETTE 564C 43724342
B 295 DOMINETTE 972

BW	WW	YW	Milk	MV	YSC	REA	MARB	CHB
4.1	51	83	29	54	11.2	0.46	0.12	120

Pasture exposed to low birth weight Angus bulls 5/7/24 to 8/2/24.



W4 7177 DOMET K651

DOB: 10/05/2022 Cow 44587071 Tattoo: K651

CL1 DOMINO 5191C 1ET
CL 1 DOMINO 7177E 43800276
CL1 DOMINETTE 5201C 1ET
CL 1 DOMINO 697S
MISS DOMINO M410 43514137
MISS DOMINO M617

BW	WW	YW	Milk	MV	YSC	REA	MARB	CHB
2.6	58	90	23	52	9.6	0.33	0.13	108

Pasture exposed to low birth weight Angus bulls 5/7/24 to 8/2/24.



W4 E030 DOMET H655

DOB: 10/02/2022 Cow 44587290 Tattoo: K655

DH DOMINO 392A
W4 392A MR BEEF E030 43852398
W4 0387 DOMET B183
DH DOMINO 392A
W4 392A DOMET D549 43945682
W4 4011 DOMET U023

BW	WW	YW	Milk	MV	YSC	REA	MARB	CHB
1.7	49	82	32	56	15.2	0.4	-0.01	107

Pasture exposed to low birth weight Angus bulls 5/7/24 to 8/2/24.



W4 103F DOMET K658

DOB: 10/22/2022 Cow 44591863 Tattoo: K658

C BAILEES MILES 4312 ET
W4 4312 DESPERADO 103F ET 43962996
W4 2002 LADY C008
CHURCHILL DOMINO 166Y
W4 166 DOMET B043 43520556
W4 955 MAGGIE 134Y ET

BW	WW	YW	Milk	MV	YSC	REA	MARB	CHB
3.1	49	79	28	53	7.6	0.41	0.16	128

Pasture exposed to low birth weight Angus bulls 5/7/24 to 8/2/24.



W4 4312 BAILEE K666

DOB: 10/07/2022 Cow 44587265 Tattoo: K666

C MILES MCKEE 2103 ET
C BAILEES MILES 4312 ET 43487323
BR BAILEE 1066 ET
C PURE GOLD 6224 ET
W4 6224 DOMET Y688 43314202
W4 4011 DOMET S039

BW	WW	YW	Milk	MV	YSC	REA	MARB	CHB
4.3	54	91	27	54	9.7	0.58	0.13	126

Pasture exposed to low birth weight Angus bulls 5/7/24 to 8/2/24.



W4 107G DOMET K671

DOB: 10/10/2022 Cow 44587154 Tattoo: K671

CL 1 DOMINO 7195E
W4 7195 ADVANCE DOM 107G ET 44189991
H CCC MS 1068Y ADVANCE 4431 ET
B 295 DOMINO 6058
W4 6058 DOMET A604 43517178
W4 4011 DOMET T757

BW	WW	YW	Milk	MV	YSC	REA	MARB	CHB
3.4	54	85	27	54	9.6	0.36	0.07	115

Pasture exposed to low birth weight Angus bulls 5/7/24 to 8/2/24.



W4 7177 DOMET K679

DOB: 11/10/2022 Cow 44587157 Tattoo: K679

CL1 DOMINO 5191C 1ET
CL 1 DOMINO 7177E 43800276
CL1 DOMINETTE 5201C 1ET
CL 1 DOMINO 314A
W4 314 DOMET E081 43950300
B DOMINETTE 579C

BW	WW	YW	Milk	MV	YSC	REA	MARB	CHB
1.7	57	86	30	59	13.2	0.26	0.22	115

Pasture exposed to low birth weight Angus bulls 5/7/24 to 8/2/24.



W4 E030 DOMET K680

DOB: 10/12/2022 Cow 44587127 Tattoo: K680

DH DOMINO 392A
W4 392A MR BEEF E030 43852398
W4 0387 DOMET B183
BAR-S-SOF MR 88X 310
W4 310 MS RIBEYE D725 43945629
B 295 DOMINETTE 754

BW	WW	YW	Milk	MV	YSC	REA	MARB	CHB
3.3	48	81	32	56	14.3	0.36	0.03	105

Pasture exposed to low birth weight Angus bulls 5/7/24 to 8/2/24.



W4 F613 MS ADVANCE K685

DOB: 10/13/2022 Cow 44587056 Tattoo: K685

SR DIABLO 613A
W4 DIABLO ROGER F613 44113970
F 032X DOMINETTE 458
C BAILEES MILES 4312 ET
W4 4312 MS ADVANCE 105G ET 44328523
HH MISS ADVANCE 9168W

BW	WW	YW	Milk	MV	YSC	REA	MARB	CHB
4.6	62	98	34	65	14.1	0.66	0.1	124

Pasture exposed to low birth weight Angus bulls 5/7/24 to 8/2/24.



W4 106D DOMET K689

DOB: 10/12/2022 Cow 44587331 Tattoo: K689

C 10Y HOMETOWN 4108
W4 4108 HOMETOWN 106D ET 43742956
HH MISS ADVANCE 9168W
HH ADVANCE 9005J
W4 9005 DOMET 506Z 43513602
C MS GAME PLAN 4007 ET

BW	WW	YW	Milk	MV	YSC	REA	MARB	CHB
3.5	50	79	23	48	12	0.36	0.11	113

Pasture exposed to low birth weight Angus bulls 5/7/24 to 8/2/24.



W4 4312 BAILEE K690

DOB: 10/16/2022 Cow 44587335 Tattoo: K690

C MILES MCKEE 2103 ET
C BAILEES MILES 4312 ET 43487323
BR BAILEE 1066 ET
CL 1 DOMINO 072X
B 72X DOMINETTE 479B 43620921
B LADY RIBSTONE 30X

BW	WW	YW	Milk	MV	YSC	REA	MARB	CHB
4.4	58	92	28	57	11.6	0.51	0.13	123

Pasture exposed to low birth weight Angus bulls 5/7/24 to 8/2/24.



W4 7177 DOMET K698

DOB: 10/18/2022 Cow 44587057 Tattoo: K698

CL1 DOMINO 5191C 1ET
CL 1 DOMINO 7177E 43800276
CL1 DOMINETTE 5201C 1ET
FS ADVANCE 1123Y
W4 1123Y ADVANCE D500 43872848
W4 4011 DOMET U068

BW	WW	YW	Milk	MV	YSC	REA	MARB	CHB
2.3	61	94	30	60	11.1	0.37	0.16	118

Pasture exposed to low birth weight Angus bulls 5/7/24 to 8/2/24.



W4 E030 DOMET K699

DOB: 10/16/2022 Cow 44587068 Tattoo: K699

DH DOMINO 392A
W4 392A MR BEEF E030 43852398
W4 0387 DOMET B183
CHURCHILL DOMINO 166Y
W4 166Y DOMET E123 43986885
GKB W4 MISS PUREGOLD B754 ET

BW	WW	YW	Milk	MV	YSC	REA	MARB	CHB
3.7	45	75	28	51	12.5	0.34	0.03	104

Pasture exposed to low birth weight Angus bulls 5/7/24 to 8/2/24.



W4 103F LADY K703

DOB: 10/16/2022 Cow 44587301 Tattoo: K703

C BAILEES MILES 4312 ET
W4 4312 DESPERADO 103F ET 43962996
W4 2002 LADY C008
CL 1 DOMINO 314A
B PI LADY 532C 43722920
B MISS FOURS 143Y

BW	WW	YW	Milk	MV	YSC	REA	MARB	CHB
1.9	45	73	29	52	11.5	0.3	0.19	121

Pasture exposed to low birth weight Angus bulls 5/7/24 to 8/2/24.



W4 1600 DOMET SENSATION K706

DOB: 10/12/2022 Cow 44587073 Tattoo: K706

CHURCHILL SENSATION 028X
KGB TFR KR SENSATION 028X 1600 43772981
H LAYLA 3521
CL 1 DOMINO 193Y 1ET
W4 193Y DOMET F666 44174220
DH L1 DOMINETTE 4138

BW	WW	YW	Milk	MV	YSC	REA	MARB	CHB
1.8	52	82	37	63	21.1	0.33	0.09	107

Pasture exposed to low birth weight Angus bulls 5/7/24 to 8/2/24.



W4 4312 BAILEE K707

DOB: 10/20/2022 Cow 44587118 Tattoo: K707

C MILES MCKEE 2103 ET
C BAILEES MILES 4312 ET 43487323
BR BAILEE 1066 ET
C MOLER 6213 ET
W4 6213 DOMET Y583 43314101
-S MS GOLD ADVANCE 4115 T211

BW	WW	YW	Milk	MV	YSC	REA	MARB	CHB
4.7	61	98	27	58	8.9	0.73	0.1	131

Pasture exposed to low birth weight Angus bulls 5/7/24 to 8/2/24.



W4 106D DOMET K715

DOB: 10/25/2022 Cow 44587288 Tattoo: K715

C 10Y HOMETOWN 4108
W4 4108 HOMETOWN 106D ET 43742956
HH MISS ADVANCE 9168W
DOMINO M021
MISSXDOMINO M517 43597525
MISS DOMINO M311

BW	WW	YW	Milk	MV	YSC	REA	MARB	CHB
3.8	53	83	27	54	13.5	0.38	0.15	117

Pasture exposed to low birth weight Angus bulls 5/7/24 to 8/2/24.



W4 4312 BAILEE K717

DOB: 10/20/2022 Cow 44587292 Tattoo: K717

C MILES MCKEE 2103 ET
C BAILEES MILES 4312 ET 43487323
BR BAILEE 1066 ET
B EXCEL 20 ET
B LADY EXCELL 436B 43620869
B ROCKETTE 721

BW	WW	YW	Milk	MV	YSC	REA	MARB	CHB
5.6	57	94	25	53	11.9	0.44	0.1	117

Pasture exposed to low birth weight Angus bulls 5/7/24 to 8/2/24.





W4 7177 DOMET K720

DOB: 10/27/2022 Cow 44587328 Tattoo: K720

CL1 DOMINO 5191C 1ET
CL 1 DOMINO 7177E 43800276
CL1 DOMINETTE 5201C 1ET
GH ADAMS NORTHERN YANK ET 230U
B MISTY ROBIN 447B 43620896
B LADY FOURS 113Y

BW	WW	YW	Milk	MV	YSC	REA	MARB	CHB
2.6	61	96	27	58	9.7	0.36	0.26	125

Pasture exposed to low birth weight Angus bulls 5/7/24 to 8/2/24.



W4 F613 DOMET K745

DOB: 11/10/2022 Cow 44587092 Tattoo: K745

SR DIABLO 613A
W4 DIABLO ROGER F613 44113970
F 032X DOMINETTE 458
CHURCHILL DOMINO 166Y
W4 166Y DOMET E607 44059870
W4 1120 ADVANCE DOM B029

BW	WW	YW	Milk	MV	YSC	REA	MARB	CHB
3.9	54	85	29	56	12.5	0.5	0.12	120

Pasture exposed to low birth weight Angus bulls 5/7/24 to 8/2/24.



W4 F633 DOMET K724

DOB: 11/05/2022 Cow 44591865 Tattoo: K724

DH DOMINO 392A
W4 392A MR BEEF F633 44147922
DHR LADY SENSATION GO BOB 493
BAR-S-SOF MR 88X 310
W4 310 MS RIBEYE C093 43765345
W4 SS 028X LADY A010

BW	WW	YW	Milk	MV	YSC	REA	MARB	CHB
2.4	59	90	32	61	18.2	0.58	0.1	113

Pasture exposed to low birth weight Angus bulls 5/7/24 to 8/2/24.



W4 108E LADY K725

DOB: 11/03/2022 Cow 44587185 Tattoo: K725

UPS SENSATION 2296 ET
W4 2296 SENSATION 108E P43852998
TOWNER PHYLLIS 20B ET
H DEBERARD 7454 ET
CHURCHILL LADY 9181G ET 44053409
DM BR SAVANNA 714 ET

BW	WW	YW	Milk	MV	YSC	REA	MARB	CHB
3.7	58	97	30	59	16.9	0.8	0.04	125

Pasture exposed to low birth weight Angus bulls 5/7/24 to 8/2/24.



W4 1600 DREAMGURL K727

DOB: 10/15/2022 Cow 44587332 Tattoo: K727

CHURCHILL SENSATION 028X
KGB TFR KR SENSATION 028X 1600 43772981
H LAYLA 3521
SR CCC JAMBALAYA 1404B ET
SR JAMBA DREAMGIRL 1839 43987910
SR LADY 88X RAWHIDE 1545

BW	WW	YW	Milk	MV	YSC	REA	MARB	CHB
3.2	61	96	38	69	24.1	0.51	0.13	115

Pasture exposed to low birth weight Angus bulls 5/7/24 to 8/2/24.



W4 7177 DOMET K729

DOB: 11/03/2022 Cow 44587135 Tattoo: K729

CL1 DOMINO 5191C 1ET
CL 1 DOMINO 7177E 43800276
CL1 DOMINETTE 5201C 1ET
HH ADVANCE 8203U ET
W4 8203 MS ADVANCE C070 43765285
H LADY DOMINO 6048

BW	WW	YW	Milk	MV	YSC	REA	MARB	CHB
3.9	60	89	23	53	11.6	0.28	0.2	116

Pasture exposed to low birth weight Angus bulls 5/7/24 to 8/2/24.



W4 E030 DOMET K733

DOB: 11/14/2022 Cow 44591867 Tattoo: K733

DH DOMINO 392A
W4 392A MR BEEF E030 43852398
W4 0387 DOMET B183
CHURCHILL DOMINO 166Y
W4 166Y DOMET E136 43950348
W4 188 DOMINETE R054

BW	WW	YW	Milk	MV	YSC	REA	MARB	CHB
3.6	44	74	29	51	13.7	0.29	0.05	109

Pasture exposed to low birth weight Angus bulls 5/7/24 to 8/2/24.



W4 E030 DOMET K734

DOB: 11/01/2022 Cow 44587270 Tattoo: K734

DH DOMINO 392A
W4 392A MR BEEF E030 43852398
W4 0387 DOMET B183
CL 1 DOMINO 215Z
DHR 215Z LADY L1 PAYBACK 785 43870173
F MS PAYBACK 338

BW	WW	YW	Milk	MV	YSC	REA	MARB	CHB
3	51	83	32	57	18.5	0.3	0.09	114

Pasture exposed to low birth weight Angus bulls 5/7/24 to 8/2/24.



W4 4312 BAILEE K739

DOB: 10/30/2022 Cow 44587099 Tattoo: K739

C MILES MCKEE 2103 ET
C BAILEES MILES 4312 ET 43487323
BR BAILEE 1066 ET
CL 1 DOMINO 7110T
DH L1 DOMINETTE 441 43485125
DH L1 DOMINETTE 952

BW	WW	YW	Milk	MV	YSC	REA	MARB	CHB
3.9	58	93	25	54	13.4	0.41	0.13	113

Pasture exposed to low birth weight Angus bulls 5/7/24 to 8/2/24.



W4 F684 DOMET H741

DOB: 10/15/2022 Cow 44587173 Tattoo: K741

DH DOMINO 392A
W4 392A MR BEEF F684 44172296
W4 955 MAGGIE 134Y ET
CL 1 DOMINO 338A
W4 338 DOMET D067 43931804
MISS DOMINO M701

BW	WW	YW	Milk	MV	YSC	REA	MARB	CHB
3.1	55	89	34	61	14.6	0.46	-0.02	111

Pasture exposed to low birth weight Angus bulls 5/7/24 to 8/2/24.



W4 0172 DOMET K747

DOB: 11/14/2022 Cow 44587275 Tattoo: K747

CL 1 DOMINO 8117F 1ET
CHURCHILL DOMINO 0172H P44164067
CHURCHILL LADY 7189E ET
DH DOMINO 392A
W4 392A DOMET G540 44227329
W4 T229 DOMET Z045

BW	WW	YW	Milk	MV	YSC	REA	MARB	CHB
2.2	61	95	30	61	13.7	0.42	0.13	118

Pasture exposed to low birth weight Angus bulls 5/7/24 to 8/2/24.



W4 0124 MS ADVANCE K749

DOB: 11/10/2022 Cow 44592600 Tattoo: K749

HH ADVANCE 7143E ET
HH ADVANCE 0124H ET 44128688
L1 DOMINETTE 06486
FS ADVANCE 7053E ET
FS MISS ADVANCE 0092H 44204837
HH MISS ADVANCE 1296Y ET

BW	WW	YW	Milk	MV	YSC	REA	MARB	CHB
4.5	59	97	26	55	16.1	0.27	0.25	124

Pasture exposed to low birth weight Angus bulls 5/7/24 to 8/2/24.



W4 9101 BELLE K751

DOB: 11/20/2022 Cow 44587333 Tattoo: K751

BR BELLE AIR 6011
C 4038 BELLE AIR 9101 ET 44019153
C 105Y LADY DOMINO 4038
H W4 LIGHTS OUT 2015 ET
F MS LIGHTS OUT 449 43468792
F MS HARLAND 119

BW	WW	YW	Milk	MV	YSC	REA	MARB	CHB
2.3	60	95	36	66	12.6	0.38	0.27	130

Pasture exposed to low birth weight Angus bulls 5/7/24 to 8/2/24.



W4 108E DOMET K752

DOB: 12/01/2022 Cow 44591871 Tattoo: K752

UPS SENSATION 2296 ET
W4 2296 SENSATION 108E P43852998
TOWNER PHYLLIS 20B ET
H W4 GRIZZLY 0146 ET
W4 GRIZZLY DOMET 103B ET P43735390
GKB 146 MISS MARK B422

BW	WW	YW	Milk	MV	YSC	REA	MARB	CHB
2.5	54	90	28	55	16.1	0.72	0.03	120

Pasture exposed to low birth weight Angus bulls 5/7/24 to 8/2/24.



W4 1600 DOMET K755

DOB: 11/21/2022 Cow 44587294 Tattoo: K755

CHURCHILL SENSATION 028X
KGB TFR KR SENSATION 028X 1600 43772981
H LAYLA 3521
CL 1 DOMINO 7195E
W4 7195 DOMET G035 44432406
W4 B080 DOMET D663

BW	WW	YW	Milk	MV	YSC	REA	MARB	CHB
2.4	61	98	35	66	20.5	0.48	0.15	121

Pasture exposed to low birth weight Angus bulls 5/7/24 to 8/2/24.



W4 106D DOMET K757

DOB: 12/05/2022 Cow 44591873 Tattoo: K757

C 10Y HOMETOWN 4108
W4 4108 HOMETOWN 106D ET 43742956
HH MISS ADVANCE 9168W
DB 5216 DOM 0387
W4 0387 DOM F083 44114235
W4 T154 LADY DOMET B076

BW	WW	YW	Milk	MV	YSC	REA	MARB	CHB
3.5	51	87	28	53	14.6	0.45	0.15	118

Pasture exposed to low birth weight Angus bulls 5/7/24 to 8/2/24.



W4 F613 POLLY K758

DOB: 12/14/2022 Cow 44591876 Tattoo: K758

SR DIABLO 613A
W4 DIABLO ROGER F613 44113970
F 032X DOMINETTE 458
B TOP DOG 45Y
B MISS POLLY 463B 43622235
B AMERICAN HONEY 8X

BW	WW	YW	Milk	MV	YSC	REA	MARB	CHB
4.4	58	92	29	58	13	0.62	0.12	125

Pasture exposed to low birth weight Angus bulls 5/7/24 to 8/2/24.



W4 0021 MS ADVANCE K760

DOB: 11/28/2022 Cow 44587308 Tattoo: K760

NJW LONG HAUL 36E ET
RCR LONG COFFEE 20021 P44119843
RCR MS COFFEE 3027 17723 ET
KGB TFR KR SENSATION 028X 1600
W4 MV 1600 MS ADVANCE G402 44061993
W4 502Y MS ADVANCE D521

BW	WW	YW	Milk	MV	YSC	REA	MARB	CHB
2.4	62	97	37	68	24.8	0.44	0.11	122

Pasture exposed to low birth weight Angus bulls 5/7/24 to 8/2/24.



W4 F613 DIVA K764

DOB: 11/15/2022 Cow 44587170 Tattoo: K764

SR DIABLO 613A
W4 DIABLO ROGER F613 44113970
F 032X DOMINETTE 458
GOLDEN OAK OUTCROSS 18U
W4 OUTCROSS DIVA 108Z ET P43337644
C MS PURE GOLD 5007 ET

BW	WW	YW	Milk	MV	YSC	REA	MARB	CHB
4.1	60	94	30	60	14.5	0.79	0.05	125

Pasture exposed to low birth weight Angus bulls 5/7/24 to 8/2/24.



W4 4312 BAILEE K767

DOB: 12/24/2022 Cow 44591878 Tattoo: K767

C MILES MCKEE 2103 ET
C BAILEES MILES 4312 ET 43487323
BR BAILEE 1066 ET
C 212 DOMINO 4011 ET
W4 4011 DOMET Y507 43314031
W4 6213 DOMET U711

BW	WW	YW	Milk	MV	YSC	REA	MARB	CHB
3.9	52	87	27	52	8.7	0.55	0.13	124

Pasture exposed to low birth weight Angus bulls 5/7/24 to 8/2/24.



W4 106D LILLY K768

DOB: 12/01/2022 Cow 44587059 Tattoo: K768

C 10Y HOMETOWN 4108
W4 4108 HOMETOWN 106D ET 43742956
HH MISS ADVANCE 9168W
LBH 157K RIBSTONE ET 19T
B LILLY 85X 43154435
B 9213 DOMINETTE 526

BW	WW	YW	Milk	MV	YSC	REA	MARB	CHB
4.5	56	89	29	57	12.9	0.39	0.13	113

Pasture exposed to low birth weight Angus bulls 5/7/24 to 8/2/24.



W4 9101 DIVA K769

DOB: 12/24/2022 Cow 44591879 Tattoo: K769

BR BELLE AIR 6011
C 4038 BELLE AIR 9101 ET 44019153
C 105Y LADY DOMINO 4038
GOLDEN OAK OUTCROSS 18U
W4 OUTCROSS DIVA 104Z ET P43337642
C MS PURE GOLD 5007 ET

BW	WW	YW	Milk	MV	YSC	REA	MARB	CHB
3.1	60	95	31	61	15	0.59	0.2	134

Pasture exposed to low birth weight Angus bulls 5/7/24 to 8/2/24.



W4 E030 DOMET K775

DOB: 11/25/2022 Cow 44587305 Tattoo: K775

DH DOMINO 392A
W4 392A MR BEEF E030 43852398
W4 0387 DOMET B183
DOMINO M021
W4 021 DOMET D035 43874012
MISS L1 DOMINO M419

BW	WW	YW	Milk	MV	YSC	REA	MARB	CHB
3.5	46	79	28	51	13.8	0.28	0	102

Pasture exposed to low birth weight Angus bulls 5/7/24 to 8/2/24.



W4 F633 DOMET K787

DOB: 12/22/2022 Cow 44591881 Tattoo: K787

DH DOMINO 392A
W4 392A MR BEEF F633 44147922
DHR LADY SENSATION GO BOB 493
W4 4011 DOMINO T154
W4 T154 DOMET B062 43520648
C 125 MS DOM 7028

BW	WW	YW	Milk	MV	YSC	REA	MARB	CHB
2.1	48	80	25	49	13.4	0.56	0.08	114

Pasture exposed to low birth weight Angus bulls 5/7/24 to 8/2/24.



W4 103F DOMET K788

DOB: 12/20/2022 Cow 44587295 Tattoo: K788

C BAILEES MILES 4312 ET
W4 4312 DESPERADO 103F ET 43962996
W4 2002 LADY C008
B CHURCHILL 6033
W4 6033 DOMET A851 43725915
BC REAL PRINCESS F276

BW	WW	YW	Milk	MV	YSC	REA	MARB	CHB
3.7	46	75	23	46	9.4	0.34	0.12	117

Pasture exposed to low birth weight Angus bulls 5/7/24 to 8/2/24.



W4 106D DOMET HOME K792

DOB: 12/01/2022 Cow 44591847 Tattoo: K792

C 10Y HOMETOWN 4108
W4 4108 HOMETOWN 106D ET 43742956
HH MISS ADVANCE 9168W
W4 MR MVP R612
W4 612 DOMET A610 43517195
WR 188 DOMET R009

BW	WW	YW	Milk	MV	YSC	REA	MARB	CHB
3.4	51	78	22	48	12.3	0.36	0.12	114

Pasture exposed to low birth weight Angus bulls 5/7/24 to 8/2/24.



W4 MV 100H MS ADVANCE K421

DOB: 09/26/2022 Cow 44412756 Tattoo: K421

CL 1 DOMINO 7195E
W4 7195 DOMINO 100H ET 44186649
CHURCHILL LADY 5131C ET
W4 S109 ADVANCE 502Y ET
W4 502Y MS ADVANCE D521 43948387
W4 T15 DOMET W086

BW	WW	YW	Milk	MV	YSC	REA	MARB	CHB
4	59	96	29	58	16.2	0.44	0.12	130

Pasture exposed to low birth weight Angus bulls 5/7/24 to 8/2/24.



W4 MV 100H MS ADVANCE K422

DOB: 09/26/2022 Cow 44412758 Tattoo: K422

CL 1 DOMINO 7195E
W4 7195 DOMINO 100H ET 44186649
CHURCHILL LADY 5131C ET
W4 S109 ADVANCE 502Y ET
W4 502Y MS ADVANCE D521 43948387
W4 T15 DOMET W086

BW	WW	YW	Milk	MV	YSC	REA	MARB	CHB
3.6	56	92	29	56	16.2	0.41	0.12	130

Pasture exposed to low birth weight Angus bulls 5/7/24 to 8/2/24.



W4 MV 100H DOMINO K423

DOB: 10/14/2022 Cow 44412759 Tattoo: K423

CL 1 DOMINO 7195E
W4 7195 DOMINO 100H ET 44186649
CHURCHILL LADY 5131C ET
DH DOMINO 109Y
W4 109Y DOMINO D719 43949487
DH DOMINETTE 2209

BW	WW	YW	Milk	MV	YSC	REA	MARB	CHB
3.6	56	92	31	59	15.1	0.43	0.09	122

Pasture exposed to low birth weight Angus bulls 5/7/24 to 8/2/24.



W4 SPRING CREEK K02

DOB: 10/27/2022 Cow 44472241 Tattoo: 7570647

DH DOMINO 109Y
W4 109Y DOMINO D718 43931167
DH MS ADVANCE 3192
W4 613 ACHIEVER U006
SPRING CREEK E6 44059521
W4 4011 DOMET T109

BW	WW	YW	Milk	MV	YSC	REA	MARB	CHB
5	58	99	28	57	7	0.51	0.02	115

Pasture exposed to low birth weight Angus bulls 5/7/24 to 8/2/24.



W4 SPRING CREEK K03

DOB: 10/14/2022 Cow 44472238 Tattoo: 7570647

DH DOMINO 109Y
W4 109Y DOMINO D718 43931167
DH MS ADVANCE 3192
W4 613 ACHIEVER U006
SPRING CREEK C10 43647132
W4 S025 DOMET Z684

BW	WW	YW	Milk	MV	YSC	REA	MARB	CHB
4.8	55	93	26	54	8.4	0.51	0.03	117

Pasture exposed to low birth weight Angus bulls 5/7/24 to 8/2/24.



W4 SPRING CREEK K10

DOB: 10/29/2022 Cow 44472242 Tattoo: K10

DH DOMINO 109Y
W4 109Y DOMINO D718 43931167
DH MS ADVANCE 3192
W4 4011 DOMINO S025
W4 5025 DOMET Z684 43396312
W4 4011 DOMET T089

BW	WW	YW	Milk	MV	YSC	REA	MARB	CHB
4.7	55	88	29	56	10.2	0.48	0	110

Pasture exposed to low birth weight Angus bulls 5/7/24 to 8/2/24.



W42C DOMBEEF K001

DOB: 11/04/2022 Cow 44418854 Tattoo: K001

HH ADVANCE 8203U ET
W4 392A MR BEEF D557 43924628
W4 955 MAGGIE 134Y ET
W4 613 DOMINO W219
W4 W219 DOMET E001 43928294
W4 9005 DOMET 506Z

BW	WW	YW	Milk	MV	YSC	REA	MARB	CHB
4.9	48	89	21	45	7.9	0.45	0.04	128

Pasture exposed to low birth weight Angus bulls 5/7/24 to 8/2/24.



W42C MISS DOM BEEF K042

DOB: 11/26/2022 Cow 44418856 Tattoo: K042

HH ADVANCE 8203U ET
W4 392A MR BEEF D557 43924628
W4 955 MAGGIE 134Y ET
W4 S109 ADVANCE 502Y ET
W4 502Y DOMET E042 43928307
W4 592 DOMET 125Y 2ET

BW	WW	YW	Milk	MV	YSC	REA	MARB	CHB
5.7	53	96	21	48	1.4	0.45	0.01	122

Pasture exposed to low birth weight Angus bulls 5/7/24 to 8/2/24.



"We have purchased a number of females from W4 and now the next generation of the family, my grandsons, are adding their genetics. These females get to the ranch and hit the ground working. They have consistently raised high quality calves, and they do so efficiently. We are very pleased with their performance."

Mark Ellison
Milam County, Texas

Mark Ellison



IS YOUR AGENT A LIVESTOCK SPECIALIST?

WE KNOW LIVESTOCK INSURANCE BECAUSE WE SPECIALIZE IN IT.

Our livestock insurance solutions are tailored to meet the unique needs of your operation, ensuring you are protected against unexpected events.



ANNUAL FORAGE

Protects forage plants grown for livestock feed against lack of rainfall, offering coverage that secures your feed supply through unpredictable weather conditions.



LIVESTOCK RISK PROTECTION (LRP)

Aids in managing price risk by providing coverage against market price downturns.



ANIMAL MORTALITY

Provides coverage for death, or humane destruction of a covered animal as a result of an accident, injury, illness, disease and/or disability occurring during the policy period.



PASTURE, RANGELAND, FORAGE (PRF)

A rainfall index program designed to provide coverage for losses of forage for grazing or harvested for hay.



www.momentum.ag

TO LEARN MORE, CONTACT
STEVE RUSSELL AT
(903) 573-0481 OR
srussell@momentum.ag.



A DIVISION OF PATRIOT GROWTH INSURANCE SERVICES, LLC. WE ARE AN EQUAL OPPORTUNITY PROVIDER.



Automated and remote weighing for simplified livestock management.

Weigh more frequently without the extra trips through the chute. Less manual labor for you, less stress for your animals. Easily access animal weight data on your mobile or desktop anytime, anywhere.

[Want more information?](#)

Scan here to learn more about the Auto Weigher





How To Participate

as an absentee buyer

VIEWING THE AUCTION ONLINE

The auction will be broadcast online at Bid.SuperiorLivestock.com and the pre-recorded videos will also be hosted there prior to and on sale day. You do not need an account or login just to watch the auction.

ONLINE BIDDING

Go to Bid.SuperiorLivestock.com for Superior's new online bidding platform. If you have not registered there before you will need to create an account if you wish to bid (there is no registration required just to watch the auction). Once you have created an account, request a buyer number and you will then be able to bid online with the largest and most trusted cattle marketing entity in North America. Superior's new platform allows you to see both the live stream of the auction AND the pre-recorded videos on one screen at the same time!



PUREBRED PLATFORM
Bid.SuperiorLivestock.com

TURN IN BIDS OVER THE PHONE

This is Superior's suggested bidding method for anybody who does not have consistent, high-speed internet. You still must register an account at Bid.SuperiorLivestock.com and request a buyer number and upon doing so you will see the bid line phone number. Just watch the auction online and call in at least 2 lots ahead of the lot you are looking to bid on.

FOR HELP WITH REGISTRATION OR ANY PART OF THE BIDDING PROCESS PLEASE CALL SUPERIOR AT (800) 422-2117.



Thank You...



for your interest in our Fall Sale.



RANCH

EST. 1961

JOHNSON

CATTLE MARKETING

Tom Johnson
440 FM 246
Wortham, TX 76693

FIRST CLASS MAIL
U.S. POSTAGE
PAID
WORTHAM, TX
PERMIT NO. 8



RANCH
EST. 1961